



SERVICE MANUAL

L830/ L730



# CONTENTS

---

## I . SPECIFICATION

1. CAMERA SPECIFICATION .....	4
2. System Requirements .....	7
3. LCD monitor indicator.....	8
4. CONNECTION DIAGRAM .....	11
5. IDENTIFICATION OF FEATURES.....	12

## II . EXPLODED VIEW AND PARTS LIST

1. MAIN ASSEMBLY.....	14
2. BODY ASSEMBLY 1 .....	16
3. BODY ASSEMBLY 2 .....	18
4. BARREL ASSEMBLY .....	20
5. TOP COVER ASSEMBLY .....	24
6. FRONT COVER ASSEMBLY .....	26
7. BACK COVER ASSEMBLY .....	28
8. PACKING ITEM.....	30

## III . ADJUSTMENT

1. FIRMWARE .....	34
2. ADJUSTMENT CAUTION .....	46

## IV . PATTERN DIAGRAM

1. PARTS ARRANGEMENT FOR EACH PCB ASS' Y	
1) MAIN_TOP .....	59
2) MAIN_BOTTOM .....	60
3) CCD .....	61
4) MODE .....	62
5) STROBO .....	63

## V . CIRCUIT DIAGRAM

---

---

1) MAIN .....	64
2) MAIN_MEMORY .....	65
3) MAIN_CCD .....	66
4) MAIN_LCD.....	67
5) MAIN_KEY.....	68
6) MAIN_STROBO .....	69
7) MAIN_POWER .....	70
8) MAIN_MOTOR .....	71
9) CCD .....	72
10) MODE .....	73
11) STROBO .....	74

<b>VI. SERVICE INFORMATION .....</b>	<b>75</b>
--------------------------------------	-----------

# I . SPECIFICATION

---

## 1. CAMERA SPECIFICATION

- Image Sensor**
- Type : 1/2.5" CCD
  - Effective Pixel :
    - L830 : Approx. 8.1 Mega-pixel
    - L730 : Approx. 7.2 Mega-pixel
  - Total Pixel :
    - L830 : Approx. 8.3 Mega-pixel
    - L730 : Approx. 7.4 Mega-pixel

- Lens**
- Focal Length : NV Lens  $f = 6.3 \sim 18.9\text{mm}$  (35mm film equivalent : 38 ~ 114mm)
  - F No. : F 3.0 ~ F 7.7(Wide), F 5.6 ~ F 14.1(Tele)
  - Digital Zoom :
    - L830 :
      - Still Image mode : 1.0X ~ 5.0X
      - Play mode : 1.0X ~ 12.8X (depends on image size)
    - L730 :
      - Still Image mode : 1.0X ~ 5.0X
      - Play mode : 1.0X ~ 12.0X (depends on image size)

- LCD Monitor** - 2.5" color TFT LCD (230,000 dots)

- Focusing**
- Type : TTL auto focus, Multi-AF, Face Recognition AF
  - Range

	Normal	Macro	Auto Macro
Wide	80cm ~ Infinity	10cm ~ 80cm	10cm ~ Infinity
Tele		50cm ~ 80cm	50cm ~ Infinity

- Shutter** - Speed 1 ~ 1/1,500 sec. (Manual : 8 ~ 1/1,500 sec.)

- Exposure**
- Control : Program AE
  - Metering : Multi, Spot, Face Recognition
  - Compensation :  $\pm 2\text{EV}$  (1/3EV steps)
  - ISO :
    - L830 : Auto, 80, 100, 200, 400, 800, 1600
    - L730 : Auto, 80, 100, 200, 400, 800, 1600

- Flash**
- Modes : Auto, Auto & Red-eye reduction, Fill-in flash, Slow sync, Flash off, Red-eye Fix
  - Range : Wide : 0.2m ~ 4.6m, Tele : 0.5m ~ 2.6m(ISO AUTO)
  - Recharging Time : Approx. 4 sec

- Sharpness** - Soft+, Soft, Normal, Vivid, Vivid+

- Color Effect** - Normal, B&W, Sepia, Red, Blue, Green, Negative, Custom Color

- White Balance** - Auto, Daylight, Cloudy, Fluorescent\_H, Fluorescent\_L, Tungsten, Custom

- Voice Recording**
- Voice Recording (max. 10 hours)
  - Voice Memo in Still Image (max. 10 sec.)







**Date Imprinting** - Date, Date & Time, Off (user selectable)

**Shooting**







- Still Image
  - Mode : Auto, Program, ASR, Manual, Scene, Portrait, Night
  - Scene : Children, Landscape, Close-up, Text, Sunset, Dawn, Backlight, Fireworks, Beach & Snow
  - Shooting : Single, Wise shot, Continuous, AEB, Motion Capture
  - Self-timer : 2 sec., 10 sec., Double
- Movie Clip
  - With Audio or without Audio(user selectable, recording time : memory capacity dependent)
    - ※ The maximum memory capacity of continuous movie clip is 2 hours.
  - Size : 800x592, 640x480, 320x240 (20fps Only 800x592 quality)
  - Frame rate : 30 fps, 20 fps, 15 fps
    - (15/20 fps for 800x592, 720x480)
    - (30fps / 15fps Only 640x480, 320x240 quality)
  - Frame rate : 30 fps, 20 fps, 15 fps

**Storage**

- Media
  - Internal memory : 10MB flash memory
  - External Memory (Optional)
    - : SD (up to 2GB guaranteed)
    - SDHC Card (up to 4GB guaranteed)
    - MMC Plus (Up to 1GB, 4bit 20MHz)
- File Format
  - Still Image : JPEG (DCF), EXIF 2.2, DPOF 1.1, PictBridge 1.0
  - Movie Clip : AVI (MPEG-4)
  - Audio : WAV
- Image Size
  - L830

					
3264x2448	3264x2176	3264x1836	2592x1944	2048x1536	1024x768

- L730

					
3072x2304	3072x2048	3072x1728	2592x1944	2048x1536	1024x768

## I . SPECIFICATION

- Capacity (256 MB Size)

· L830

	8M	7M	6M	5M	3M	100
Super Fine	53	63	76	94	142	459
Fine	104	118	144	181	264	710
Normal	151	197	223	256	363	822

· L730

	7M	6M	5M	5M	3M	100
Super Fine	67	80	95	95	142	459
Fine	128	157	183	183	269	710
Normal	188	223	269	269	363	822

※ These figures are measured under Samsung standard conditions and may vary depending on shooting conditions and camera settings.

### “E” Button

- Effect : Color, Image Adjust, Fun (Highlight, Composite, Photo Frame)
- Editing : Resize, Rotate, Color, Special Color, Image Adjust (Red Eye Fix, Brightness, Contrast, Saturation, Add Noise), Fun (Cartoon, Highlight, Composite, Photo Frame, Sticker)

### Image Play

- Type : Single image, Thumbnails, Slide show, Movie Clip

### Interface

- Digital output connector : USB 2.0 High Speed
- Audio : Mono
- Video output : NTSC, PAL (user selectable)

### Power Source

- Rechargeable battery : SLB-0937, 3.7V (900mAh)
- Adaptor : SAC-46 (DC 4.2V, 450mA)

### Dimensions (WxHxD)

- 95 X 59 X 21mm (excluding protrusions)

### Weight

- Approx. 132.6g (without batteries and card)

### Operating Temperature

- 0 ~ 40° C

### Operating Humidity

- 5 ~ 85%

### Software

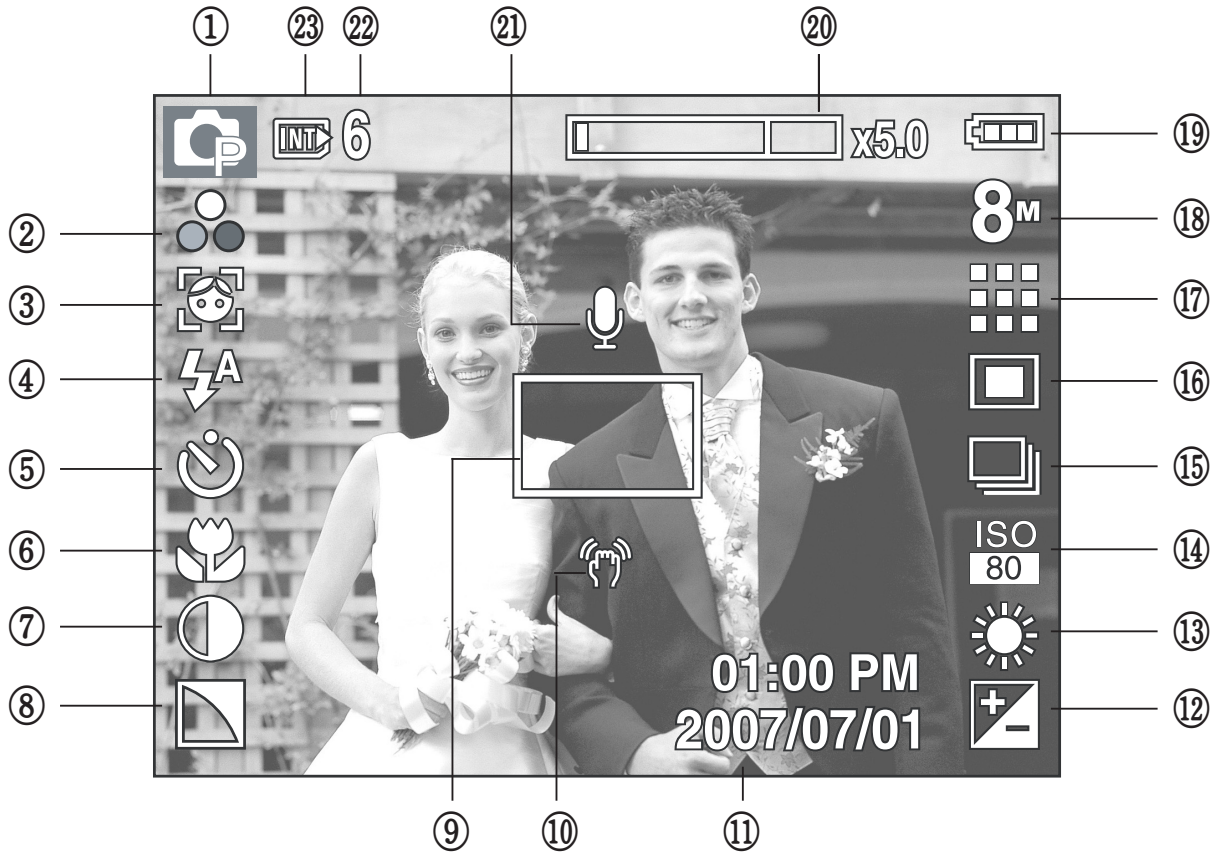
- Samsung Master, Adobe Reader

## 2. System Requirements

For Windows	For Macintosh
PC with processor better than Pentium II 450MHz (Pentium 800MHz recommended)	Power Mac G3 or later
Windows 98SE/2000/ME/XP/Vista	Mac OS 10.0 ~ 10.4
Minimum 128MB RAM (Over 512MB recommended) 200MB of available hard disk space (Over 1GB recommend)	Minimum 64MB RAM 110MB of available hard-disk space
USB port	USB port
CD-ROM drive	CD-ROM drive
1024x768 pixels, 16bit color display compatible monitor (24bit color display recommended) MicroSoft DirectX 9.0C	MPlayer (For movie clip)

### 3. LCD monitor indicator

- Recording mode

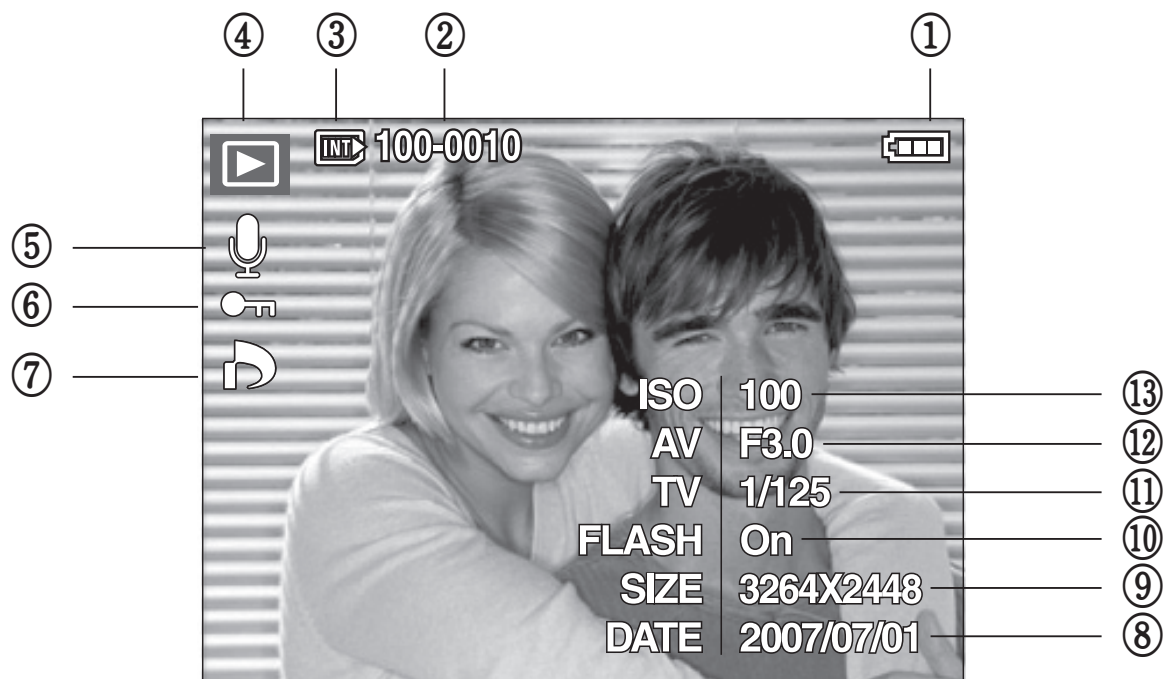


[ Image & Full Status ]



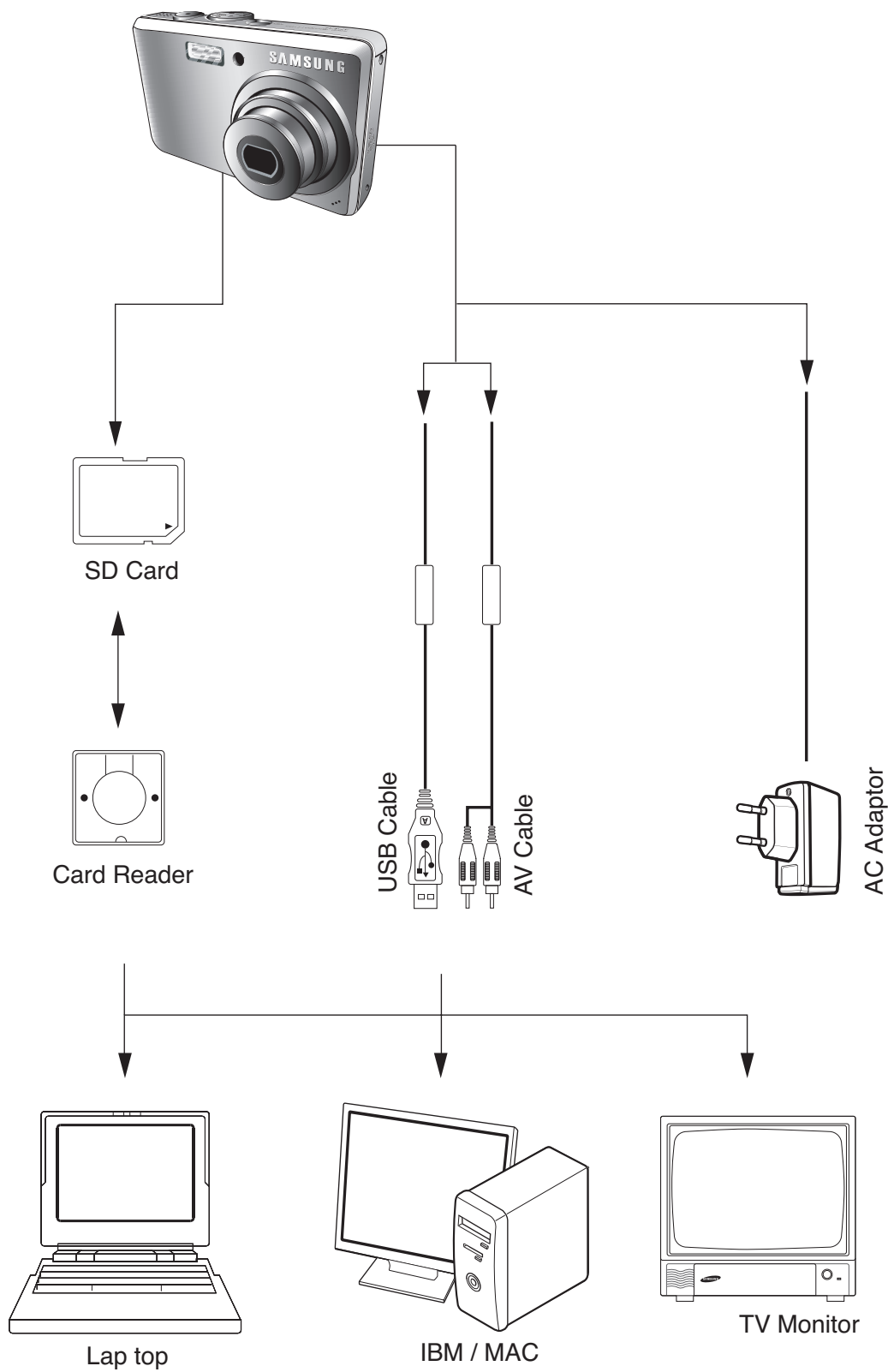


■ Play mode



No.	Description	Icons
1	Battery	
2	Folder name & File name	100-0010
3	Memory card indicator	
4	Playback mode	
5	Voice Memo	
6	Protect	
7	DPOF	
8	Recording date	2007/06/01
9	Image size	3264x2448 ~ 256X192
10	Flash	ON/OFF
11	Shutter speed	15 ~ 1/2000
12	Aperture value	F3.5 ~ F8.0
13	ISO	50 ~ 1600

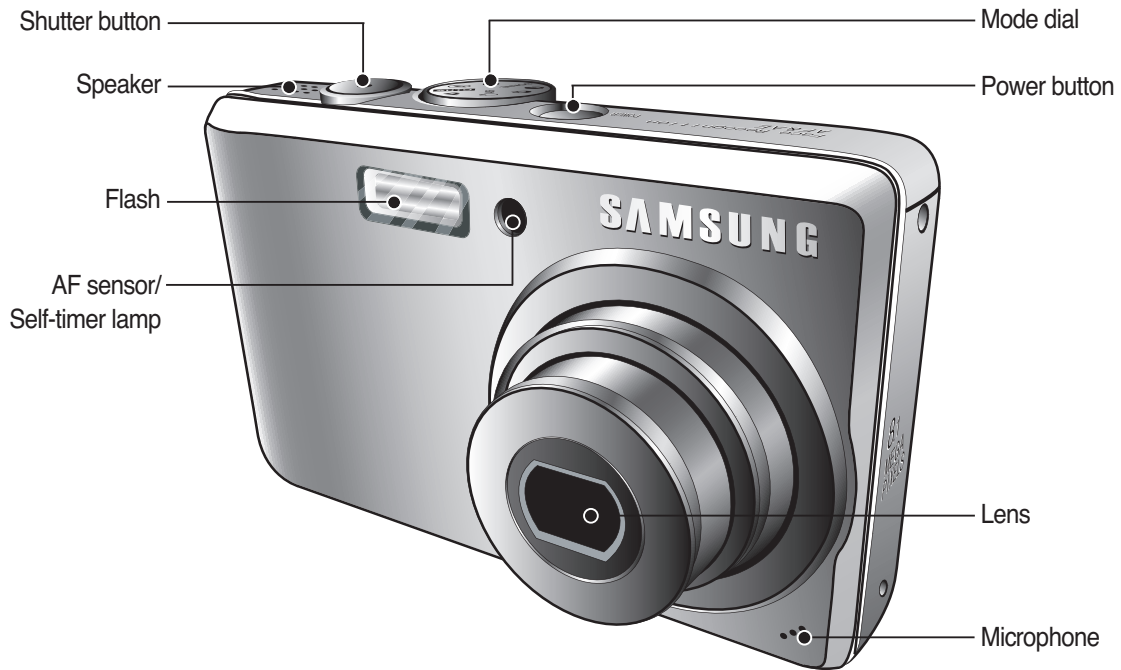
#### 4. CONNECTION DIAGRAM



## 5. IDENTIFICATION OF FEATURES

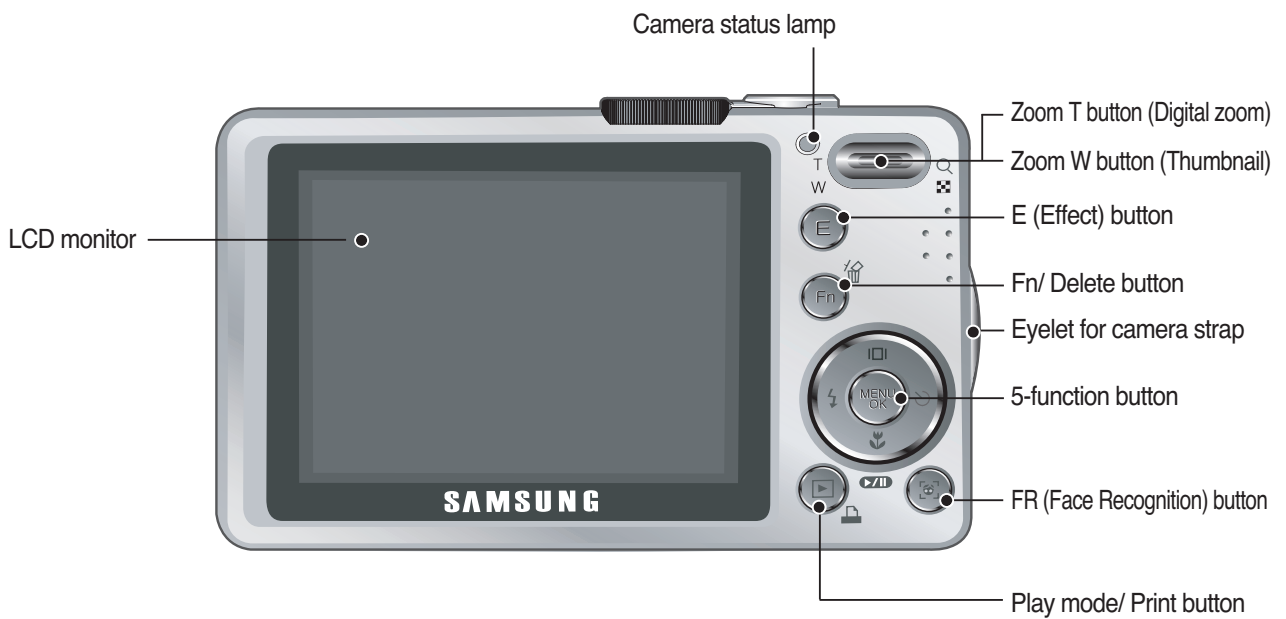
### Front & Top

---

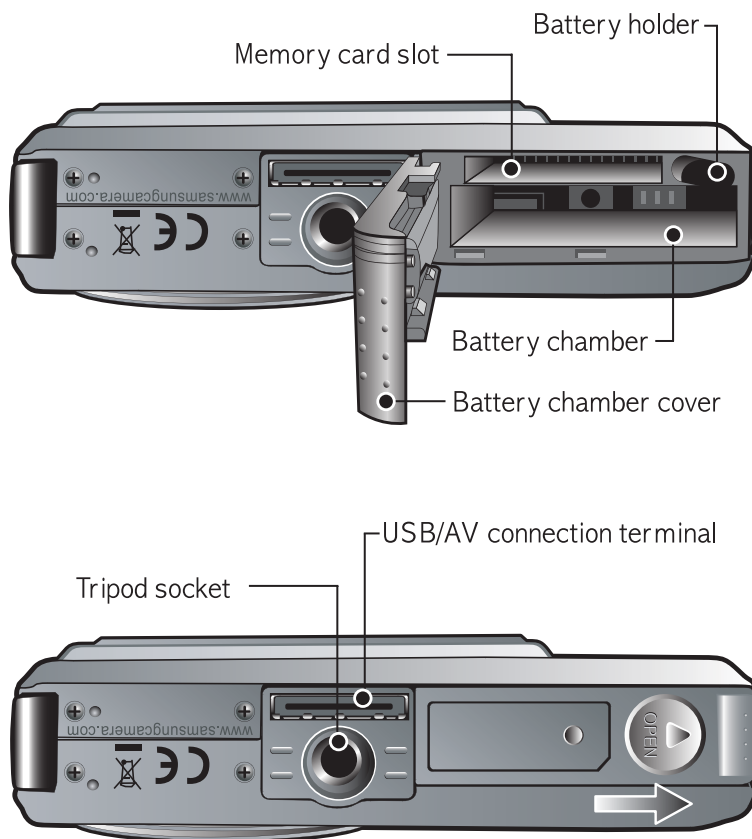


### Back

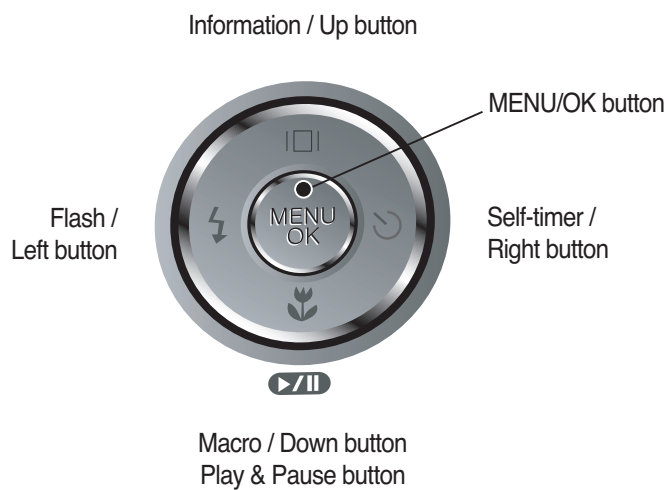
---



**Bottom**

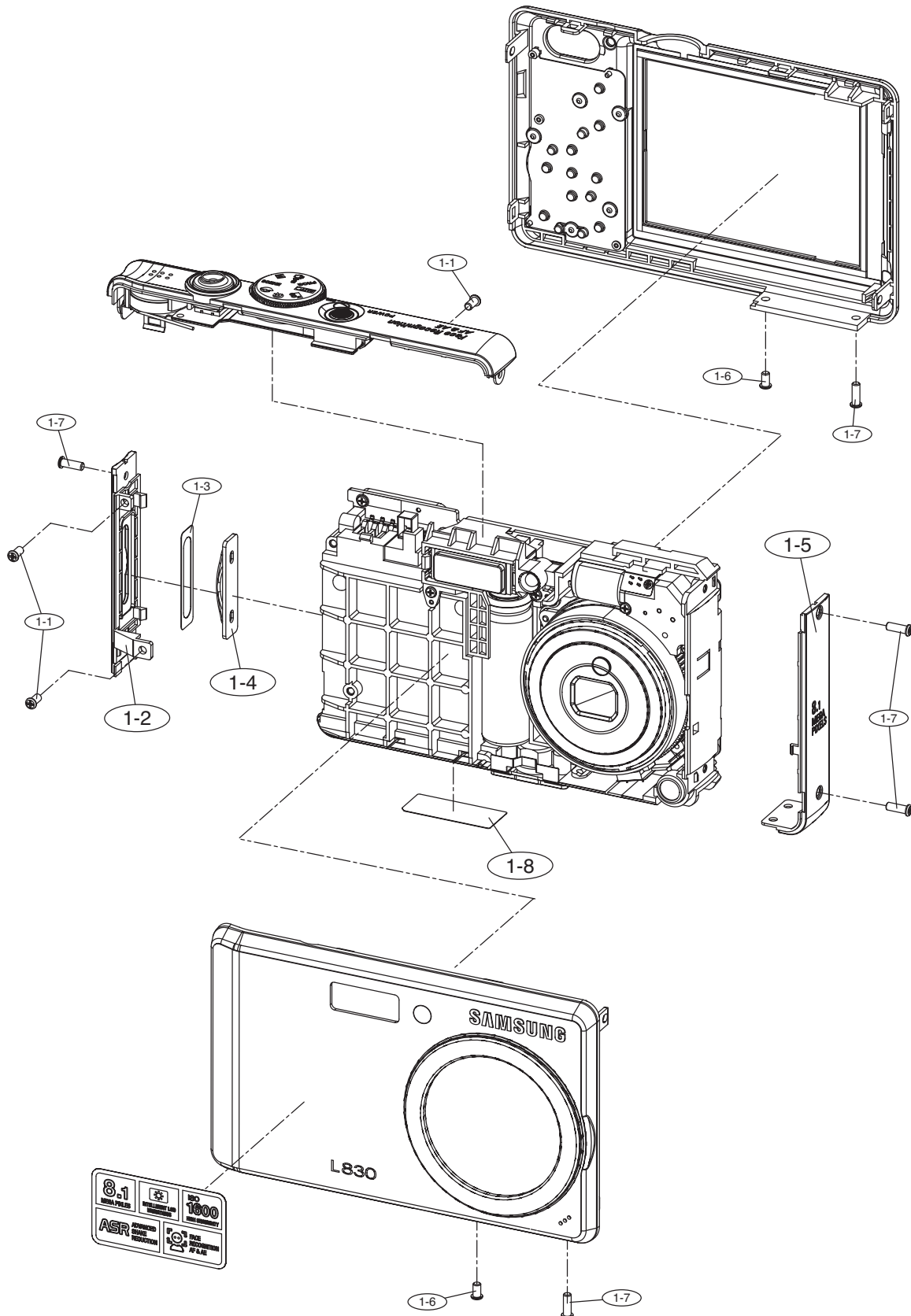


**5-function button**



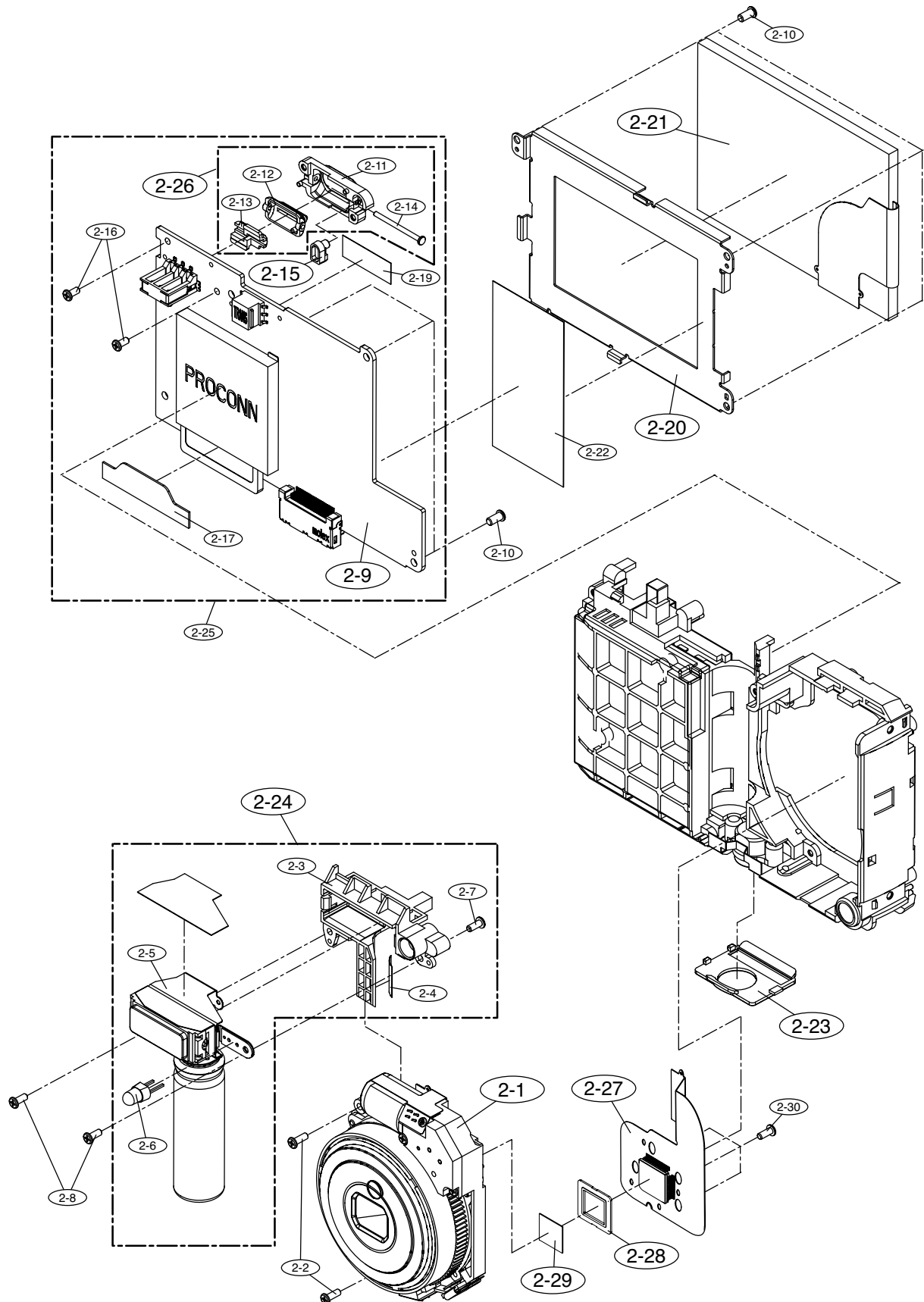
# II . EXPLODED VIEW AND PART LIST

## 1. MAIN ASSEMBLY

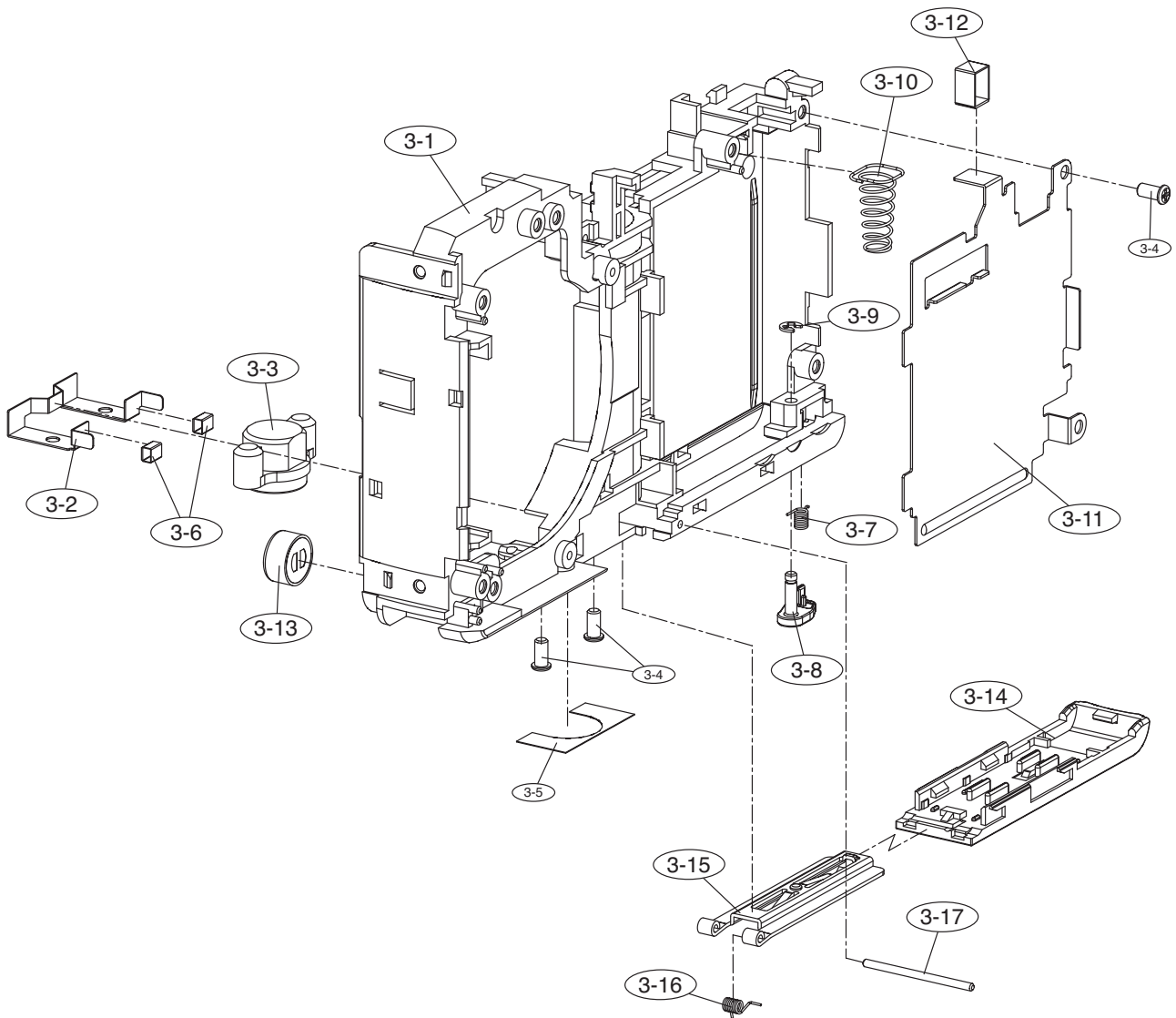


## II. EXPLODED VIEW AND PART LIST

### 2. BODY ASSEMBLY 1

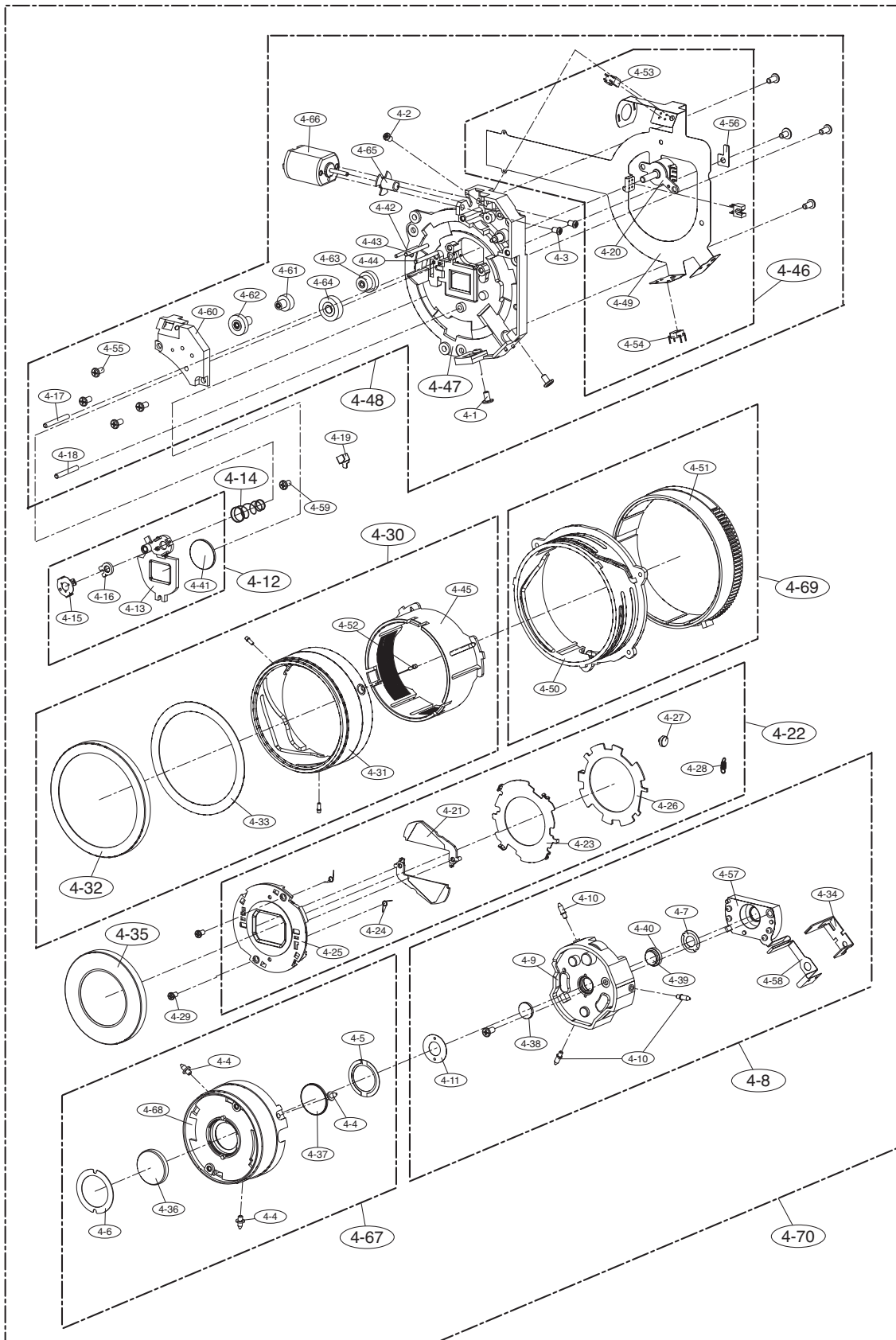


### 3. BODY ASSEMBLY 2

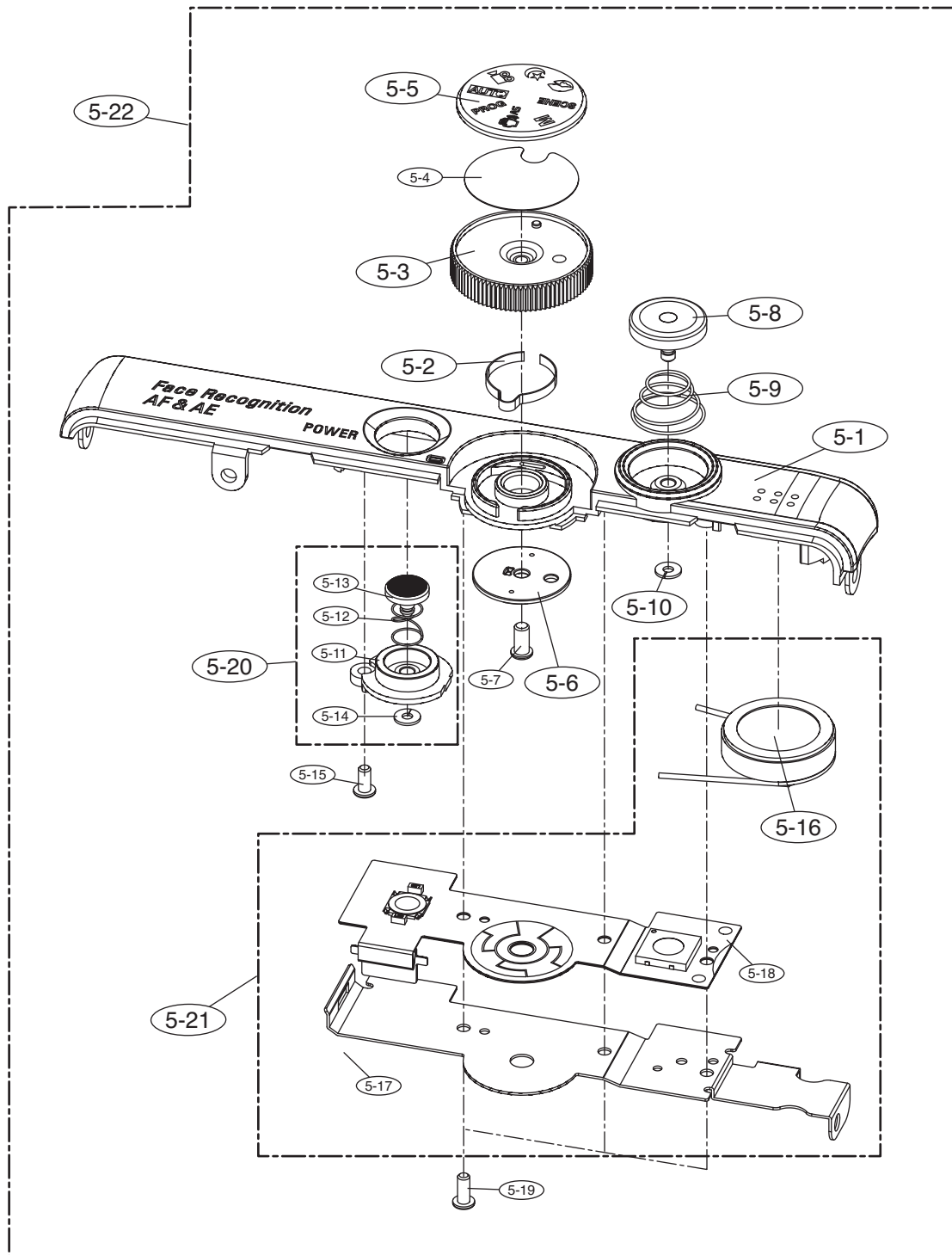




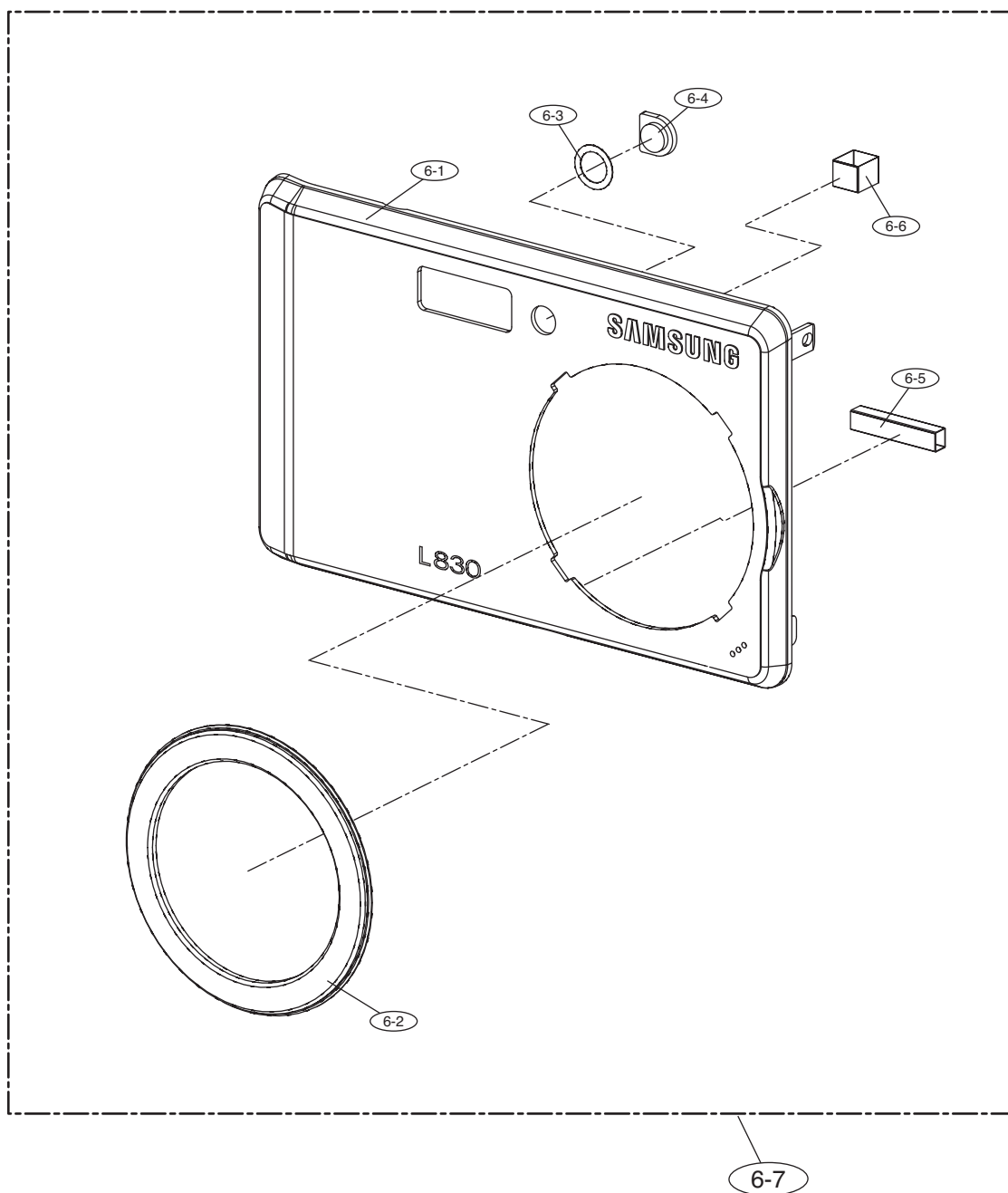
### 4. BARREL ASSEMBLY



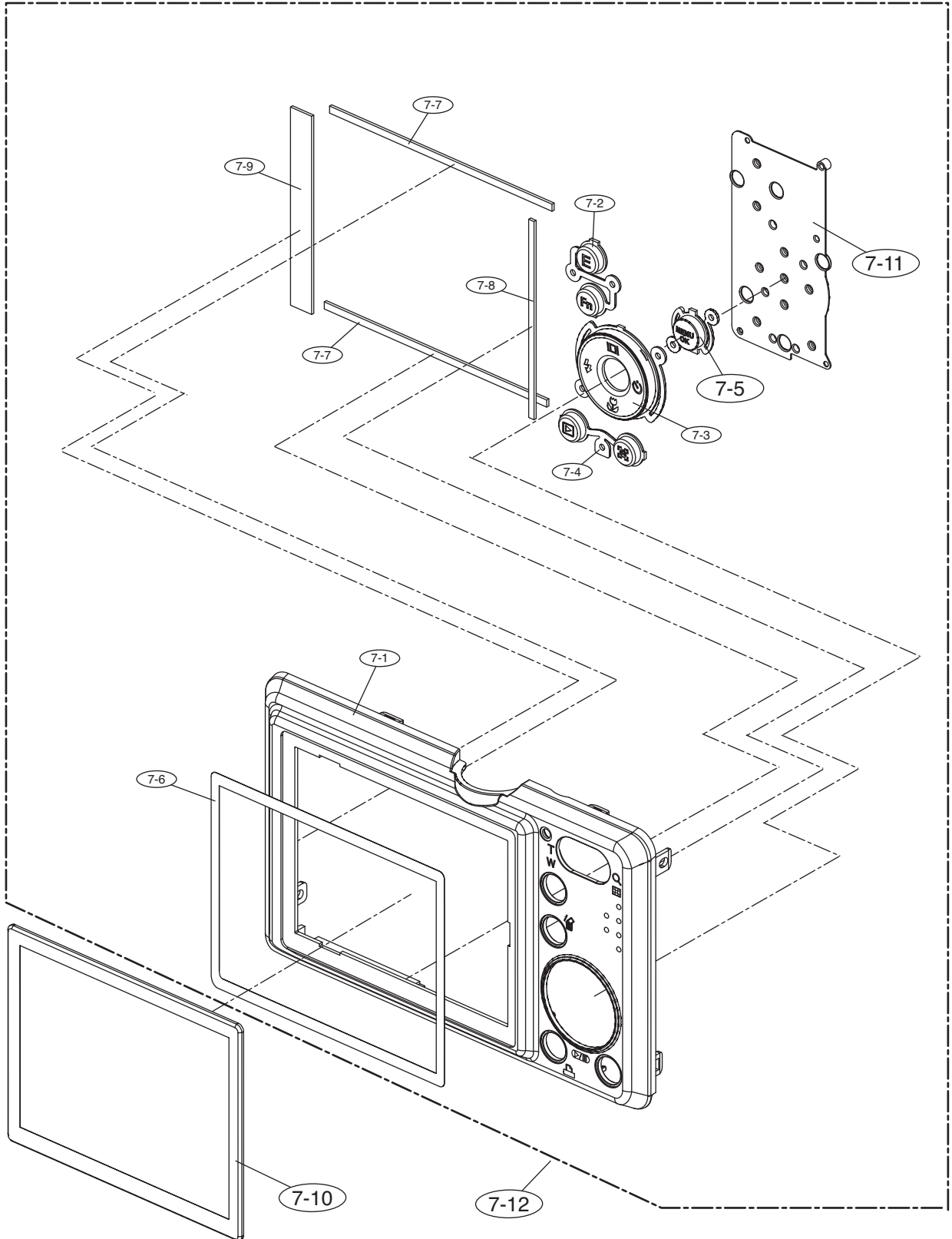
### 5. TOP COVER ASSEMBLY



6. FRONT COVER ASSEMBLY



## 7. BACK COVER ASSEMBLY



### 8. PACKING ITEM

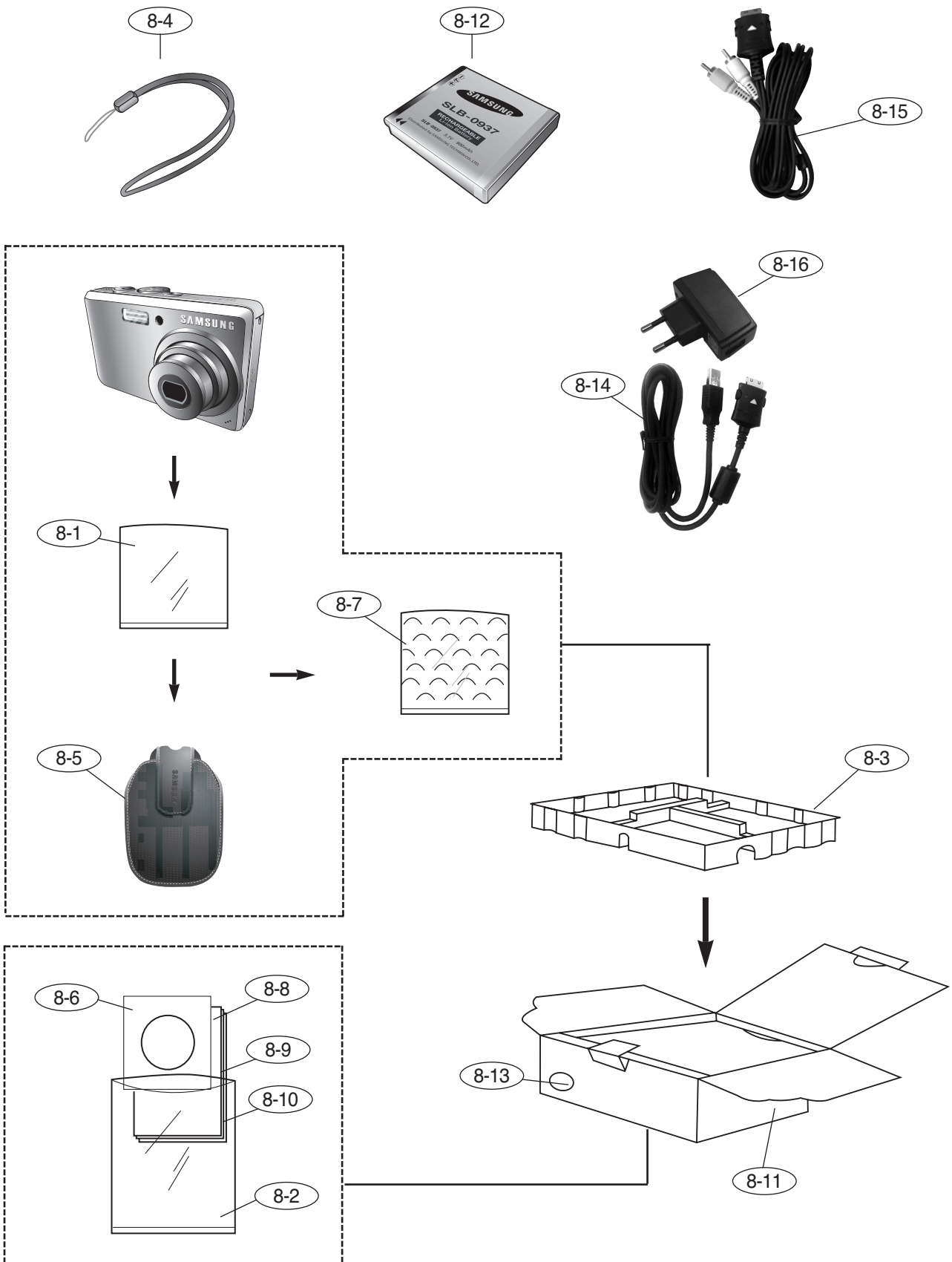


Fig.No	Old Parts Code	New Parts Code	Parts Name	Q'ty	Supply	Remark
]						
1-1	Q9761173507	6003-001690	SCREW	3	X	
1-2	Q7217413001A	AD63-01767A	MIDDLE COVER A	1	O	
1-3	Q7409298001A	DNA	STRAP TAPE	1	X	
1-4	Q7103005501A	AD61-03356A	STRAP HOLDER	1	O	
1-5	Q7217413101A	AD81-04643A	MIDDLE COVER B_L830	1	O	
	Q7217413101B	AD63-01770A	MIDDLE COVER B_L730	1	O	
1-6	Q6003042601A	DNA	SCREW	2	X	
1-7	Q6003042701A	6003-001671	SCREW	5	X	
1-8	Q7409302901A	AD68-02163A	FCC LABEL	1	O	
2.BODY ASSEMBLY1						
2-1	Q9002165301A	AD97-13571A	BARREL ASSY	1	O	
2-2	Q9762144007	DNA	SCREW	2	X	
2-3	Q7214091901A	DNA	STROBO HOLDER	1	X	
2-4	Q7409259001A	DNA	BUTTON SURPORT TAPE	1	X	
2-5	Q9004089201A	AD97-14004A	FLASH_MODULE_ASSY	1	X	
2-6	Q0408001101A	0601-002515	AF LED	1	X	
2-7	Q0961900301A	6003-001630	SCREW	1	X	
2-8	Q0961900301A	6003-001630	SCREW	2	X	
2-9	Q9008125601A	DNA	MAIN_PCB_SMD_ASSY_L830	1	X	OLD L730
	Q9008129601A	AD92-00448A	MAIN_PCB_SMD_ASSY_L730	1	O	NEW L730
2-10	Q9761173507	6003-001690	SCREW	6	X	
2-11	Q7217413501A	DNA	ZOOM LEVER HOLDER	2	X	
2-12	Q7217413401A	DNA	ZOOM LEVER	1	X	
2-13	Q7307008701A	DNA	ZOOM RUBBER	1	X	
2-14	Q7411132001A	DNA	ZOOM LEVER HINGE	1	X	
2-15	Q7217413901A	DNA	REAR ACCESS WINDOW	1	X	
2-16	Q9002159901A	DNA	SCREW	2	X	
2-17	Q7409300601A	DNA	SD CARD SHEET	1	X	
2-18	Q7409297801A	DNA	STROBO FPCB TAPE	1	X	
2-19	Q7409225001A	AD81-05134A	SD CARD TAPE	1	X	
2-20	Q7011063101A	AD61-03191A	LCD FRAME	1	O	
2-21	Q0704014401A	AD07-00075A	LCD AUO 2.5	1	O	
2-22	Q7409302101A	DNA	LCD TAPE	1	X	
2-23	Q7217413201A	AD63-01772A	BOTTOM COVER_SILVER	1	O	
	Q7217413201B	AD63-01773A	BOTTOM COVER_RED	1	O	
	Q7217413201C	AD63-01774A	BOTTOM COVER_BLACK	1	O	
2-24	Q9001131201A	AD97-13916A	STROBO_ASSY)	1	O	
2-25	Q9008125501A	AD92-00433A	MAIN_PCB_ASSY_L830	1	O	OLD L730
	Q9008129501A	AD92-00447A	MAIN_PCB_ASSY_L730	1	O	NEW L730
2-26	Q9001131301A	AD97-13917A	ZOOM LEVER_ASSY_SILVER	1	O	
	Q9001131301B	AD97-13917A	ZOOM LEVER_ASSY_RED	1	O	
	Q9001131301C	AD97-13919A	ZOOM LEVER_ASSY_BLACK	1	O	
2-27	Q9008125701A	AD92-00437A	CCD FPCB_ASSY_L830	1	O	OLD L730
	Q9008129701A	AD92-00449A	CCD FPCB_ASSY_L730	1	O	NEW L730
2-28	Q7304000403A	AD63-01895A	OLPF CUSHION	1	O	
2-29	Q2904003602A	AD63-01246A	IR CUT FILTER	1	O	
2-30	Q6003027501A	6003-001666	SCREW	1	X	
3.BODY ASSEMBLY 2						
3-1	Q7211091802A	AD62-00070A	BATTERY CHAMBER	1	O	
3-2	Q7011063501A	AD61-03196A	24PIN GROUND PLATE	1	O	
3-3	Q7211059102A	AD61-03371A	TRIPOD CONNECTOR	1	O	
3-4	Q9761173507	6003-001690	SCREW	3	X	

3-5	Q7409297701A	DNA	BOTTOM COVER TAPE	1	X
3-6	Q7409248302A	DNA	SHIELD FOAM F	2	X
3-7	Q6107077901A	6107-001466	BATTERY LOCK SPRING	1	O
3-8	Q7211091701A	AD66-00494A	BATTERY LOCK LEVER	1	O
3-9	Q6044002201A	DNA	E RING	1	X
3-10	Q6107075201A	6107-001454	BATTERY PUSH SPRING	1	O
3-11	Q7011062901A	AD61-03189A	BATTERY HOLDER PLATE	1	O
3-12	Q7409243401A	AD63-02032A	SHIELD FOAM C	1	O
3-13	Q3003001201A	3003-001123	MIC	1	O
3-14	Q7217413301A	AD63-01775A	BATTERY COVER SILVER	1	O
	Q7217413301A	AD63-01775A	BATTERY COVER RED	1	O
	Q7217413301C	AD63-01777A	BATTERY COVER BLACK	1	O
3-15	Q7011063002A	AD61-03190A	BATTERY COVER PLATE	1	O
3-16	Q7411132301A	AD61-03569A	BATTERY HINGE	1	O
3-17	Q6107077801A	6107-001465	BATTERY COVER SPRING	1	O
<b>4. BARREL ASSEMBLY</b>					
4-1	Q0994913101A	6003-001631	SCREW (1425)	3	X
4-2	Q6001014001A	6003-001632	SCREW (1420)	1	X
4-3	Q9611142007	6001-002171	SCREW (1420)	2	X
4-4	Q7411134301A	DNA	1ST MOVE PIN	3	X
4-5	Q7012098701A	DNA	1ST REAR SHEET	1	X
4-6	Q7012096401A	DNA	1ST SHEET	1	X
4-7	Q7012096801A	DNA	2ND REAR SHEET	1	X
4-8	Q9002165601A	AD97-13576A	2ND BARREL ASSY	1	O
4-9	Q7212206401A	DNA	2ND LENS BARREL	1	X
4-10	Q7411134401A	DNA	2ND MOVE PIN	3	X
4-11	Q7012096301A	DNA	2ND SHEET	1	X
4-12	Q9002165401A	AD97-13575A	3RD BARREL ASSY	1	O
4-13	Q7212206501A	DNA	3RD LENS BARREL	1	X
4-14	Q6107076301A	DNA	3RD COM SPRING	1	X
4-15	Q7012098001A	DNA	AF CLIP HOLDER	1	X
4-16	Q7212201001A	DNA	AF CLIP	1	X
4-17	Q7411134101A	DNA	AF GUIDER BAR-A	1	X
4-18	Q7411134201A	DNA	AF GUIDER BAR-B	1	X
4-19	Q7012096701A	DNA	AF GUIDE HOLDER	1	X
4-20	Q3104001501A	DNA	AF MOTOR	1	X
4-21	Q7212187601A	AD63-01512A	BARRIER-A	2	X
4-22	Q9002164701A	AD97-13565A	BARRIER ASSY		O
4-23	Q7012084201A	AD61-03233A	BARRIER BASE	1	X
4-24	Q6107064104A	DNA	BARRIER CLOSE SPRING	2	X
4-25	Q7212206301A	DNA	FRONT PANEL	1	X
4-26	Q7012084305B	DNA	BARRIER LEVER	1	X
4-27	Q7411120203A	AD66-00529A	BARRIER LEVER PIN	1	X
4-28	Q6107064203A	DNA	BARRIER OPEN SPRING	1	X
4-29	Q6003047001A	DNA	BARRIER SCREW	2	X
4-30	Q9002165001A	AD97-13568A	CAM BARREL ASSY	1	O
4-31	Q7212205901A	DNA	CAM BARREL	1	X
4-32	Q7012097101A	AD81-02894A	CAM DECORING	1	O
4-33	Q7012096501A	DNA	CAM SHIELD	1	X
4-34	Q7012096601A	DNA	F-PCB GUIDER	1	X
4-35	Q7012096201A	AD64-01769A	FRONT DECORING	1	O
4-36	Q6711048701A	DNA	G1 LENS	1	X
4-37	Q6712009901A	DNA	G2 LENS	1	X
4-38	Q6712010001A	DNA	G3 LENS	1	X
4-39	Q6711048801A	DNA	G4 LENS	1	X
4-40	Q6711048901A	DNA	G5 LENS	1	X
4-41	Q6711049001A	DNA	G6 LENS	1	X
4-42	Q7411133101A	DNA	GEAR SHAFT-A	1	X
4-43	Q7411133501A	DNA	GEAR SHAFT-B	1	X

4-44	Q7411133701A	DNA	GEAR SHAFT - C	1	X
4-45	Q7212205801A	DNA	GUIDE PLATE	1	X
4-46	Q9002165201A	AD97-13570A	LENS BASE ASSY		O
4-47	Q7212206201A	AD81-08223A	LENS BASE	1	O
4-48	Q9008119501A	AD92-00389A	MAIN FPCB ASSY		O
4-49	Q4101041201A	DNA	MAIN FPCB	1	X
4-50	Q7212206001A	DNA	OUTER CAM BARREL	1	X
4-51	Q7212206101A	DNA	OUTER GUIDE BARREL	1	X
4-52	Q7411137501A	DNA	OCB PIN	3	X
4-53	Q0608001301A	0604-001302	PHOTO INTERRUPTER	2	X
4-54	Q0608000701A	0604-001373	PHOTO REFLECTOR	1	X
4-55	Q6003000201A	6003-001633	SCREW (1430)	8	X
4-56	Q7012096901A	DNA	SENSOR HOLDER	1	X
4-57	Q5900010401A	DNA	SHUTTER ASSY	1	X
4-58	Q7409301901A	DNA	SHUTTER FPCB	1	X
4-59	Q0961900101A	6003-001629	SCREW (1425)	2	X
4-60	Q7212207801A	DNA	ZOOM COVER	1	X
4-61	Q7212208001A	DNA	ZOOM GEAR - A	1	X
4-62	Q7411137801A	DNA	ZOOM GEAR - B	1	X
4-63	Q7411137901A	DNA	ZOOM GEAR - C	1	X
4-64	Q7411138001A	DNA	ZOOM GEAR - D	1	X
4-65	Q7212207901A	DNA	ZOOM MOTOR GEAR	1	X
4-66	Q3107003001A	DNA	ZOOM MOTOR	1	X
4-67	Q9002164901A	AD97-13566A	ZOOM RING ASSY	1	O
4-68	Q7212205701A	DNA	ZOOM RING	1	X
4-69	Q9002165101A	AD97-13569A	O C B ASSY	1	O
4-70	Q9002165301A	AD97-13571A	BARREL ASSY	1	O
<b>5.TOP COVER ASSEMBLY</b>					
5-1	Q7217412901A	AD63-02560A	TOP COVER	1	O
	Q7217412901B	AD63-01764A	TOP COVER P83	1	O
5-2	Q7017039003A	AD61-03284A	MODE CLICK PLATE	1	O
5-3	Q7217413801A	AD64-02025A	MODE DIAL SILVER	1	O
	Q7217413801B	AD64-02026A	MODE DIAL RED	1	O
	Q7217413801C	AD64-02027A	MODE DIAL BLACK	1	O
5-4	Q7409227401A	DNA	MODE DIAL TAPE	1	X
5-5	Q7004002901A	AD64-01746A	MODE DIAL CAP	1	O
5-6	Q9007272001A	AD97-14371A	MODE CONTACT ASSY	1	O
5-7	Q9761173507	6003-001690	SCREW	1	X
5-8	Q7217376901A	AD64-01863A	RELEASE BUTTON	1	O
5-9	Q6107070902A	6107-001447	RELEASE BUTTON SPRING	1	O
5-10	Q7409111601A	DNA	RELEASE WASHER	1	X
5-11	Q7217401901A	DNA	POWER LED WINDOW	1	X
5-12	Q6107070901A	AD81-07604A	POWER BUTTON SPRING	1	X
5-13	Q7217401401A	DNA	POWER BUTTON	1	X
5-14	Q7409111601A	DNA	RELEASE WASHER	1	X
5-15	Q6003027501A	6003-001666	SCREW	1	X
5-16	Q3001002601A	3001-002325	SPEAKER	1	O
5-17	Q9007292601A	AD97-14756A	TOP PLATE	1	X
5-18	Q9008125901A	DNA	TOP_FPCB_SMD_ASSY	1	X
5-19	Q0961900301A	6003-001630	SCREW	3	X
5-20	Q9006018201A	AD97-14016A	POWER BUTTON_ASSY(11+12+13+14)	1	O
5-21	Q9007292601A	AD97-14756A	TOP_PLATE_ASSY(16+17+18)	1	O
5-22	Q9007292301A	AD97-14749A	TOP COVER ASSY SILVER	1	O
	Q9007292301B	AD97-14750A	TOP COVER ASSY RED	1	O
	Q9007292301C	AD97-14751A	TOP COVER ASSY BLACK	1	O
	Q9007292301D	AD97-14752A	TOP COVER ASSY_P83_SILVER	1	O
<b>6.FORNT COVER ASSEMBLY</b>					
6-1	Q7017059701A	DNA	FRONT COVER	1	X



6-2	Q7004002801A	DNA	FRONT DECO RING	1	X	
6-3	Q7409297901A	DNA	AF LED WINDOW TAPE	1	X	
6-4	Q7217402001A	DNA	AF LED WINDOW	1	X	
6-5	Q7409726301A	DNA	SHIELD FOAM G	1	X	
6-6	Q7409281701A	DNA	BACK COVER SHIELD FOAM	1	X	
6-7	Q9007292001A	AD97-14726A	FRONT COVER ASSY L830 SILVER	1	O	Samsung
	Q9007292001B	AD97-14727A	FRONT COVER ASSY L830 SILVER	1	O	VLUU
	Q9007292001C	AD97-14728A	FRONT COVER ASSY L830 SILVER	1	O	藍調
	Q9007292001D	AD97-14729A	FRONT COVER ASSY L830 RED	1	O	Samsung
	Q9007292001E	AD97-14730A	FRONT COVER ASSY L830 RED	1	O	VLUU
	Q9007292001F	AD97-14731A	FRONT COVER ASSY L830 RED	1	O	藍調
	Q9007292001G	AD97-14732A	FRONT COVER ASSY L830 BLACK	1	O	Samsung
	Q9007292001H	AD97-14733A	FRONT COVER ASSY L830 BLACK	1	O	VLUU
	Q9007292001I	AD97-14734A	FRONT COVER ASSY L830 BLACK	1	O	藍調
	Q9007292001J	AD97-14735A	FRONT COVER ASSY L730 SILVER	1	O	Samsung
	Q9007292001K	AD97-14736A	FRONT COVER ASSY L730 SILVER	1	O	VLUU
	Q9007292001L	AD97-14737A	FRONT COVER ASSY L730 SILVER	1	O	藍調
	Q9007292001M	AD97-14738A	FRONT COVER ASSY L730 RED	1	O	Samsung
	Q9007292001N	AD97-14739A	FRONT COVER ASSY L730 RED	1	O	VLUU
	Q9007292001O	AD97-14740A	FRONT COVER ASSY L730 RED	1	O	藍調
	Q9007292001P	AD97-14741A	FRONT COVER ASSY L730 BLACK	1	O	Samsung
Q9007292001Q	AD97-14742A	FRONT COVER ASSY L730 BLACK	1	O	VLUU	
Q9007292001R	AD97-14743A	FRONT COVER ASSY L730 BLACK	1	O	藍調	
Q9007292001S	AD97-14744A	FRONT COVER ASSY P83 SILVER	1	O		
<b>7. BACK COVER ASSEMBLY</b>						
7-1	Q7217412801A	DNA	BACK COVER	1	X	
7-2	Q7217413601A	DNA	FUNCTION BUTTON A	1	X	
7-3	Q7217416001A	DNA	FUNCTION BUTTON B	1	X	
7-4	Q7217416101A	DNA	NAVI BUTTON	1	X	
7-5	Q7217413701A	AD64-02023A	OK BUTTON	1	O	
7-6	Q7409297601A	DNA	LCD WINDOW TAPE	1	X	
7-7	Q7409297401A	DNA	LCD CUSION B	2	X	
7-8	Q7409297501A	DNA	LCD CUSION A	1	X	
7-9	Q7409304501A	DNA	LCD CUSION C	1	X	
7-10	Q7203000201A	AD64-01813A	LCD WINDOW	1	X	
7-11	Q7307008601A	AD73-00240A	BACK BUTTON RUBBER	1	O	
7-12	Q9007292101A	AD97-14745A	BACK COVER ASSY SILVER	1	O	
	Q9007292101B	AD97-14747A	BACK COVER ASSY RED	1	O	
	Q9007292101C	AD97-14747A	BACK COVER ASSY BLACK	1	O	
<b>8. PACKING ITEM</b>						
8-1	QP960210101A	DNA	PE BAG (FOR CAMERA)	1	O	
8-2	Q6909018202A	6902-000921	PE BAG (FOR ACCESSORY)	1	O	
8-3	Q6901263201A	AD69-01140A	Pulp_mold_VLUU i70	1	O	
8-4	Q7409301801A	AD63-02602A	STRAP_VLUU_L730_Silver	1	O	
		AD63-02603A	STRAP_VLUU_L730_Black	1	O	
8-5	Q6904033001A	AD81-02630A	POUCH_L730	1	O	
8-6	Q4609020101A	AD81-01047A	DRIVER_MASTER_VLUU_L730	1	O	
8-7	Q6909019601A	DNA	AIR BAG_L730_830(FOR BODY)	1	O	
	Q6806461301A	DNA	U_MANUAL_VLUU_L730_L830	1	X	
	Q6806461401A	DNA	U_MANUAL_L730_L830_ENG	1	X	
	Q6806461501A	DNA	U_MANUAL_L730_L830_GER	1	X	
	Q6806461601A	DNA	U_MANUAL_L730_L830_FRA	1	X	
	Q6806461701A	DNA	U_MANUAL_L730_L830_SPA	1	X	
	Q6806461801A	DNA	U_MANUAL_L730_L830_ITA	1	X	
	Q6806461901A	DNA	U_MANUAL_L730_L830_CHI_T	1	X	
	Q6806462001A	DNA	U_MANUAL_L730_L830_DUT	1	X	
	Q6806462101A	DNA	U_MANUAL_L730_L830_POR	1	X	
	Q6806462201A	DNA	U_MANUAL_L730_L830_SWE	1	X	

8-8	Q6806462301A	DNA	U MANUAL L730 L830_DEN	1	X
	Q6806462401A	DNA	U MANUAL L730 L830_FIN	1	X
	Q6806462501A	DNA	U MANUAL L730 L830_RUS	1	X
	Q6806462601A	DNA	U MANUAL L730 L830_CHI_S	1	X
	Q6806462701A	DNA	U MANUAL L730 L830_TK	1	X
	Q6806462801A	DNA	U MANUAL L730 L830_IND	1	X
	Q6806462901A	DNA	U MANUAL L730 L830_ARA	1	X
	Q6806463001A	DNA	U MANUAL L730 L830_THA	1	X
	Q6806463101A	DNA	U MANUAL L730 L830_POL	1	X
	Q6806463201A	DNA	U MANUAL L730 L830_CZE	1	X
	Q6806463301A	DNA	U MANUAL L730 L830_SVK	1	X
	Q6806463401A	DNA	U MANUAL L730 L830_Hun	1	X
	Q6806463501A	DNA	U MANUAL L730 L830_ROM	1	X
	Q6806463601A	DNA	U MANUAL L730 L830_BUL	1	X
8-9	Q6806463701A	AD68-01884A	QS MANUAL VLUU L730 L830	1	O
	Q6806463801A	AD68-01885A	QS M L730 L830 E G F SP I DU P 7	1	O
	Q6806463901A	AD68-01886A	QS M L730 L830 E G FI SW DA RU 6	1	O
	Q6806464001A	DNA	QS M L730 L830 E FR TU C IN AR TH 7	1	O
	Q6806464101A	DNA	QS M L730 L830 E SP FR 3	1	O
	Q6806464201A	DNA	QS M L730 L830 E G P CZ S H R B 8	1	O
8-10	QP955150101F	6801-001642	WARRANTY CARD KOREA	1	O
	Q6807003003U	6801-001646	WARRANTY CARD EXP	1	O
	Q6807012301A	DNA	WARRANTY CARD 2 YERARS	1	O
	Q6807010903C	6801-001650	WARRANTY CARD_RUS(3 YEARS)	1	O
	Q6807011301B	AD81-02236A	WARRANTY CARD_TSOE(CHINA)	1	O
	QP960150101C	6801-001643	WARRANTY CARD_TSOE(CHINA)_PRODUCT	1	O
	Q6807011701A	DNA	WARRANTY CARD_TSOE(CHINA)_BATTERY	1	O
	Q6807012101A	DNA	WARRANTY CARD_IRAN	1	O
	Q6807012401A	DNA	WARRANTY CARD_TURKEY	1	O
Q6807012501A	6801-001660	SERVICE_CENTER_TURKEY	1	O	
Q6807013001A	DNA	WARRANTY_CARD_Argentina	1	O	
8-11	Q6901282701A	AD69-01287A	GT_BOX L830 KOR	1	O
	Q6901283201A	AD69-01291A	GT_BOX L830 CHI_S	1	O
	Q6901282801A	AD81-02571A	GT_BOX L830_EXP_AUS_Silver	1	O
	Q6901282901A	DNA	GT_BOX L830_USA_Silver	1	O
	Q6901283001A	DNA	GT_BOX L830_CAN_Silver	1	O
8-12	Q4302002001A	AD81-00887A	LITHIUM-ION_SLB-0937	1	O
8-13	Q6804096001A	AD81-01535A	COLOR STICKER_Digimax S500_BLACK	1	O
	Q6804115501A	AD81-01566A	COLOR STICKER_Digimax S600/S730_RED	1	O
8-14	Q3802006201A	AD81-00743A	24PIN USB Cable(Charger)_SUC-C2	1	O
8-15	Q3802006301A	AD81-00745A	24PIN AV CABLE_NV10(WITH CORE)	1	O
8-16	Q4404001001A	AD81-00928A	AC ADAPTOR 4.2V (SAC-46)_KOR	1	O
	Q4404001101A	AD44-00123A	AC ADAPTOR 4.2V (SAC-46)_EXP	1	O
	Q4404001201A	AD44-00124A	AC ADAPTOR 4.2V (SAC-46)_USA	1	O
	Q4404001301A	AD44-00125A	AC ADAPTOR 4.2V (SAC-46)_UK	1	O
	Q4404001401A	AD44-00126A	AC ADAPTOR 4.2V (SAC-46)_AUS	1	O
	Q4404001501A	AD44-00127A	AC ADAPTOR 4.2V (SAC-46)_CHI_TSOE	1	O
	Q4404001601A	DNA	AC ADAPTOR 4.2V (SAC-46)_ARG	1	O

# III . ADJUSTMENT

---

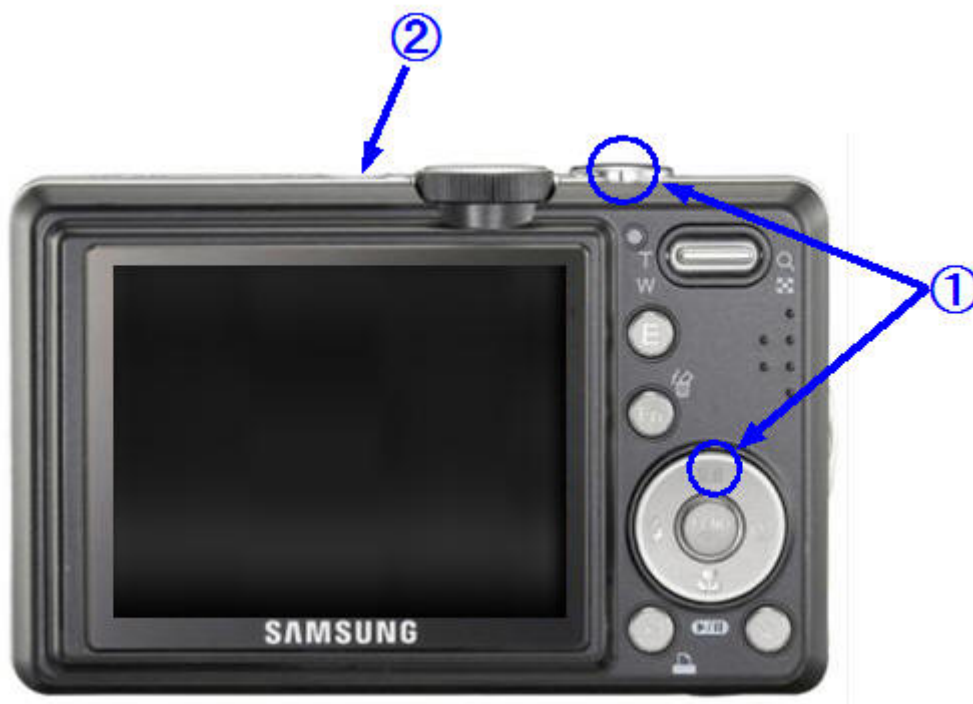
## 1. FIRMWARE

### 1) Resetting Camera

1. Turn on the Camera



2. Press and hold the Up button and the Shutter button (S2) simultaneously and then press the Power button to turn it off.



3. Turn on the camera and check whether the camera is reset or not.



### III . ADJUSTMENT

---

#### 2) Checking the Version

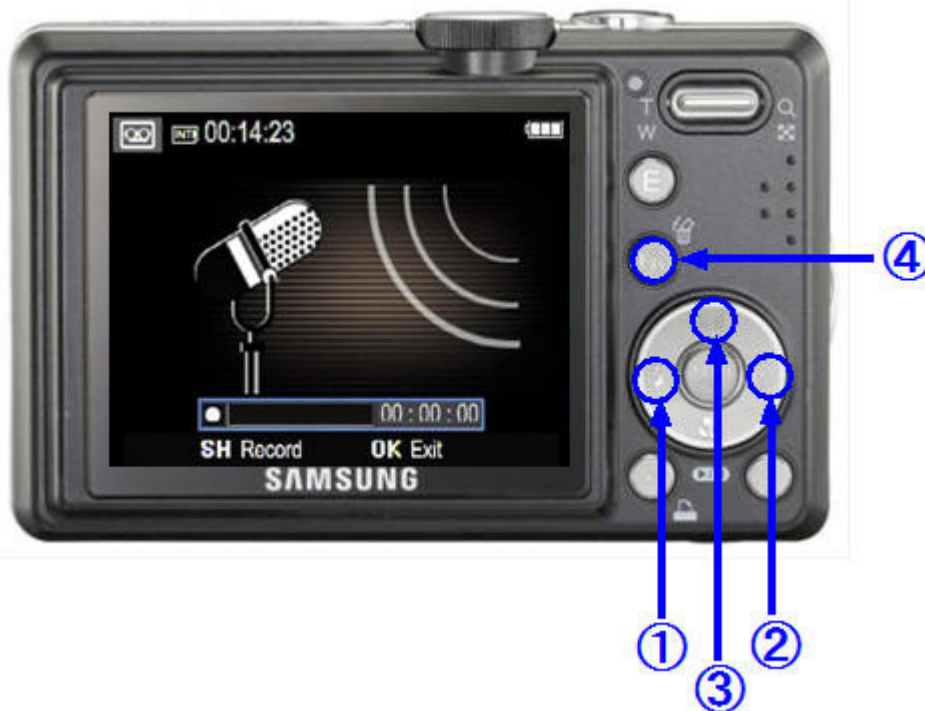
1. Remove the memory card from the camera.
2. Turn on the camera.



3. Select the Voice Record mode by pressing the MENU button.



4. Press the buttons in the following sequence: Left Button → Right Button → Down Button → Fn Button.



5. Check the firmware version and turn off the camera.



### III . ADJUSTMENT

---

#### 3) Upgrading the Firmware

1. Insert the SD card containing the firmware file into the camera.

\* Updating the firmware will delete all the data in the Flash memory. Be sure to back up all the data onto your PC before updating the firmware. The firmware file name is always "L383.ELF".

2. Connect the AC adapter or a fully charged battery.

To upgrade the firmware, the battery level indicator on the LCD monitor must be full (level three).

3. Turn on the camera.



4. Select the Voice Record mode by pressing the MENU button.



5. Press the buttons in the following sequence: Left Button → Right Button → Up Button → Fn Button





### III . ADJUSTMENT

---

6. The upgrade will start, displaying the progress message on the LCD as shown below.  
(The green Status LED blinks.)



7. After completing the upgrade, the camera is turned off automatically.

8. Turn on the camera again and select Reset in the SETUP menu.



#### 4) Full Firmware

##### **Full Firmware Procedures 1**

You can conduct a Full Firmware upgrade if your camera only has the basic functions, according to your needs.

▷ Note :

- Full Firmware is a firmware upgrade method that erases all the data and then reinstalls the firmware.
- Since Full Firmware deletes the adjustment data, you have to backup saved adjustment data before conducting Full Firmware.
- The adjustment data will automatically be backed up into the SD card if you complete the following Full Firmware upgrade procedures. In this case, you can reload the adjustment data into the camera as follows without removing the SD card containing the adjustment data.
- Check if the following data files are copied into the SD card before starting a Full Firmware upgrade: LSCLUT0.BIN, DefectivePixel0.bin, and DefectivePixel1.bin.

1. Insert the SD card containing the firmware file into the camera.

\* Updating the firmware will delete all the data in the Flash memory. Be sure to back up all the data onto your PC before updating the firmware. The firmware file name is always "L383\_FULL.ELF".

2. Connect the AC adapter or a fully charged battery.

To upgrade the firmware, the battery level indicator on the LCD monitor must be full (level three).

### III . ADJUSTMENT

---

3. Turn on the camera.



4. Select the Voice Record mode by pressing the MENU button.



5. Press the buttons in the following sequence: Left Button → Right Button → Down Button → Fn Button

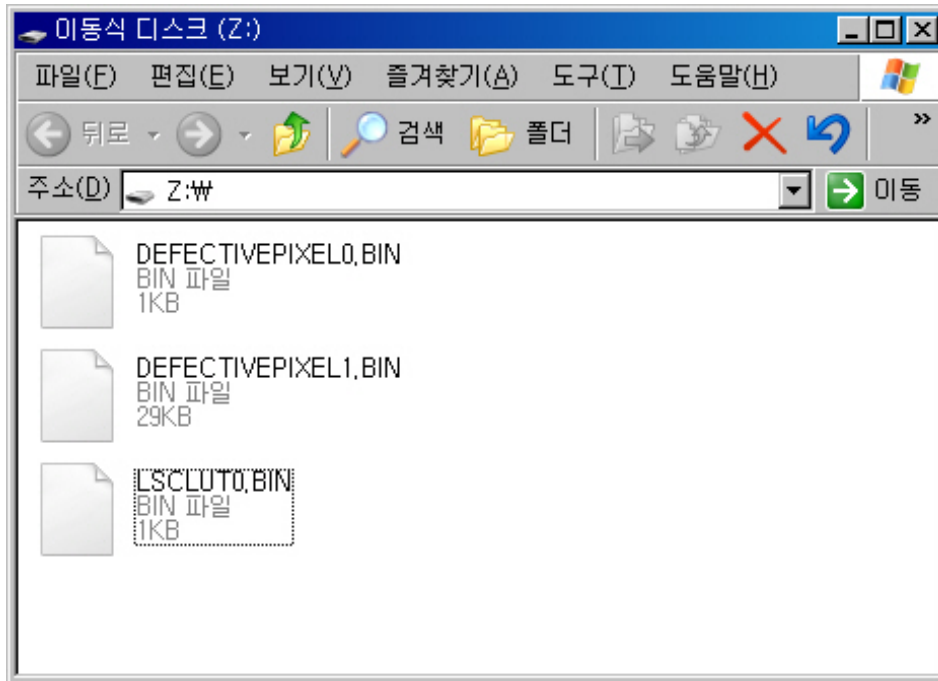


6. The upgrade will start, displaying the progress message on the LCD as shown below.  
(The green Status LED blinks.)



### III . ADJUSTMENT

- The adjustment data are automatically backed up into the SD card when you conduct a Full Firmware upgrade. Check if the following data files are copied into the SD card: LSCLUT0.BIN, DefectivePixel0.bin, and DefectivePixel1.bin



7. Insert the SD card containing the adjustment data, turn the camera on and enter the Voice Record mode by pressing the MENU button.  
Then press the direction buttons in the following sequence: Tele Button → Wide Button → Down Button → OK Button



8. The adjustment data will be restored displaying the following message.



9. Turn the camera off.

### III . ADJUSTMENT

---

## 2. Adjustment Procedures for Each Feature

### 1) Introduction to Adjustment

You have to make adjustments for each feature after replacing an electronic item in the L830.  
The following table represents necessary adjustments for each item replacement.

1> Adjust for each feature after replacing an electronic item, referring to the following table.

	MAIN PCB	POWER PCB	BARREL ASS' Y	CCD ASS' Y
FIRMWARE UPGRADE	●		●	
PUNT ADJ	●		●	●
SHUTTER CLOSE TIME ADJ	●		●	●
BACK LASH ADJ	●		●	●
FLASH ADJ	●	●		
BATTERY LEVEL ADJ	●	●		
OB SETTING	●			●
BURNING TEST & CCD DEFECT CELL	●	●	●	●
EEPROM READ				
EEPROM WRITE				

### 2> Adjustment Equipment

#### ► Required Equipment

- AE Tester: AE Tester supporting LV 16.7.
- Power Supply: 3.3V/2A

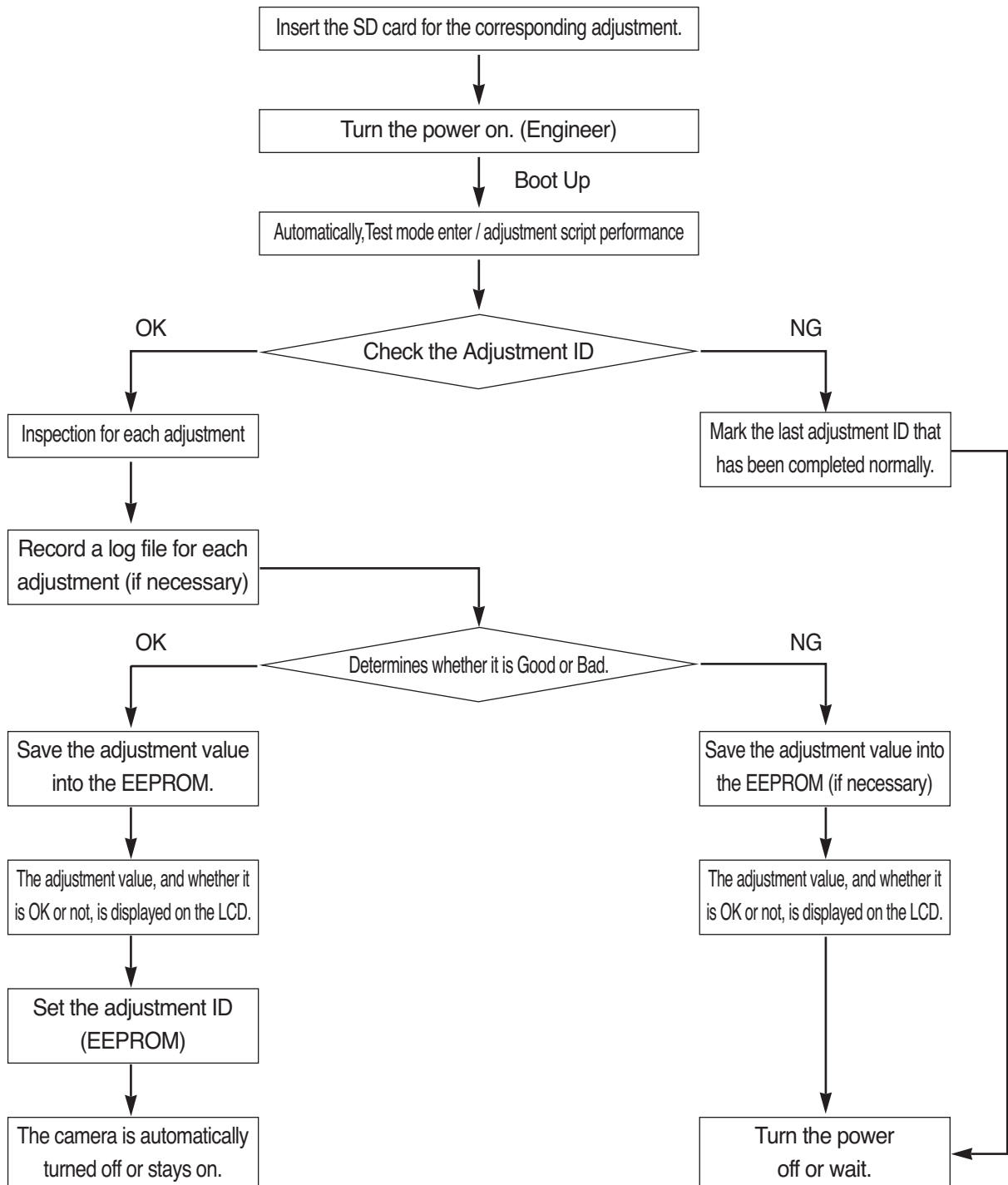
#### ► Chart

- Focus Chart
- Gray Chart (18% Reflector Paper)

3> Adjustment Program File

For each of the adjustments, copy the program for each of the adjustments into the SD card.  
The file names for each adjustment are the same as "L383ADJ.txt".

4> Adjustment Flow Chart





### III . ADJUSTMENT

---

#### 2) OB SETTING

Conduct OB setting for Preview and Capture to assess the low signal level of the input signal in order to define a valid data range for low-luminance conditions.

< Adjustment Procedures >

a...Save the corresponding adjustment file into the SD card.

b...Install the SD card containing the program file and turn the camera on.



c...The adjustment is conducted automatically.

d...When the adjustment is complete, the camera will automatically be turned off.

### 3) LENS SHADING

Adjusts the brightness of the edges of an image to compensate for the Lens Shading of the camera. Lenses tend to make the edges of an image darker than the rest. This phenomenon is called "Lens Shading". This adjustment will increase the brightness of the edges of an image.

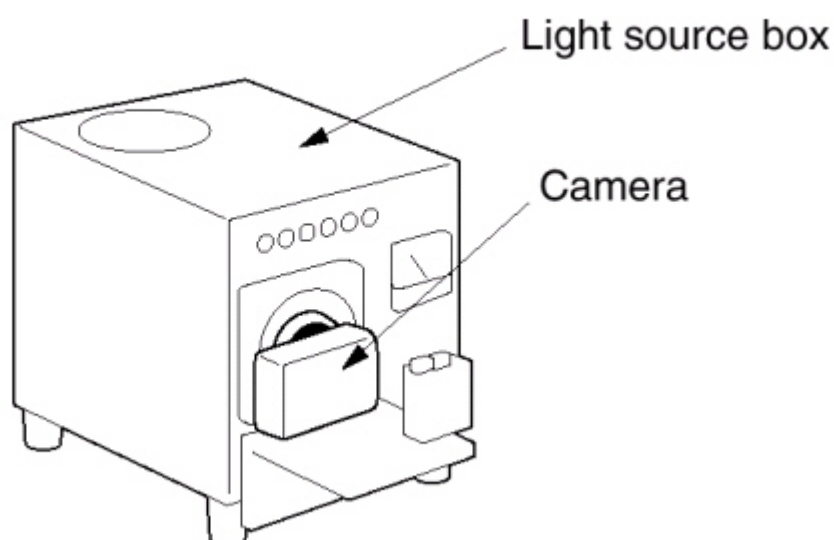
#### < Adjustment Procedures >

a...Prepare an AE Tester.

- \* The luminance specification for the Light Source Box is 8.2 LV.
- \* The position of the Light Box is  $10\text{mm}\pm 1\text{mm}$  when the lens barrel is opened.
- \* The Colour Temperature of the Light Box is 3300K.

b...Save the corresponding adjustment file into the SD card.

c...Insert the SD card containing the program file into the camera and set the camera for the AE Tester.



d...Set the LV value of the AE Meter to 8.2.

e...If you turn the camera on, the adjustment is progressed automatically.

f...When the adjustment is complete, the camera will automatically be turned off.

### III . ADJUSTMENT

---

#### 4) CCD DEFECT CELL

You can compensate for any defective CCD pixels in the camera.

< Adjustment Procedures >

a...Copy the corresponding adjustment file into the SD card.

b...Install the SD card containing the program file and turn the camera on.



c...The adjustment is conducted automatically.

d...When the adjustment is complete, the camera will automatically be turned off.

### 5) BACK LASH ADJ

You can compensate for errors that occur when the lens barrel changes direction.

< Adjustment Procedures >

a...Copy the corresponding adjustment file into the SD card.

b...Install the SD card containing the program file and turn the camera on.



c...The adjustment is conducted automatically.

d...When the adjustment is complete, the camera will automatically be turned off.

### III . ADJUSTMENT

---

#### 6) B/T LEVEL ADJ

You can adjust the voltage threshold for the battery level indicator.

< Adjustment Procedures >

a...Prepare the power supply.

b...Connect the power supply and the camera using the battery jig.

c...Set the voltage to 2.71V.

d...Save the corresponding adjustment file into the SD card.

e...Install the SD card containing the program file and turn the camera on.



f...The adjustment is conducted automatically. The LCD screen appears black.

g...When the adjustment is complete, the camera will automatically be turned off.

## 7) SHUTTER CLOSE TIME ADJ

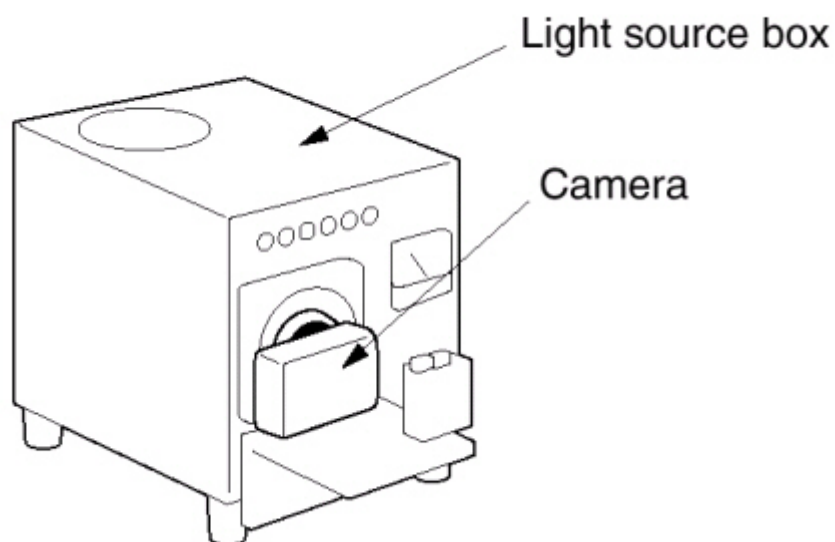
You can adjust the close timing of the camera's mechanical shutter.

Compensate for a particular camera's shutter timing deviation because each individual camera is different.

< Adjustment Procedures >

a...Prepare an AE Tester that supports LV of  $16.0 \pm 0.1$ .

b...Place the camera onto the AE Tester.



\* The luminance specification for the Light Source Box is 13 LV.

\* The Colour Temperature of the Light Box is 3300K.

c...Install the SD card containing the program file and turn the camera on.

d...The adjustment is conducted automatically.

### III . ADJUSTMENT

---

#### 8) FLASH ADJ

Limit range of brightness of the flash in order to identify hardware defects.

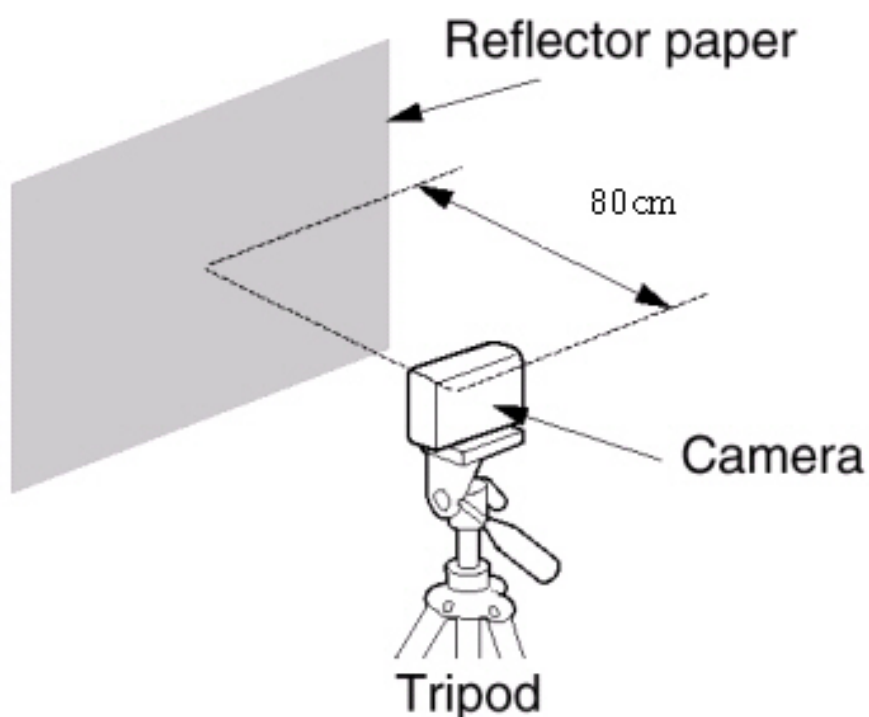
Fires the flash at each EVC level - -1EV, 0EV, and 1EV - in order to identify cameras that are out of the permitted specification range, and acquires the R and B gain of the flash.

< Adjustment Procedures >

a...Put up a piece of 18% Reflector Paper in the darkroom.

b...Set the camera up in a darkroom, using a tripod.

c...Set the distance between the Reflector Paper and the camera at 80cm.



d...Save the corresponding adjustment file into the SD card.

e...Install the SD card containing the program file and turn the camera on.

f...The adjustment is conducted automatically.

## 9) FOCUS ADJ

Objective of Adjustment: To adjust PUNT after replacing the MAIN PCB or lens barrel.

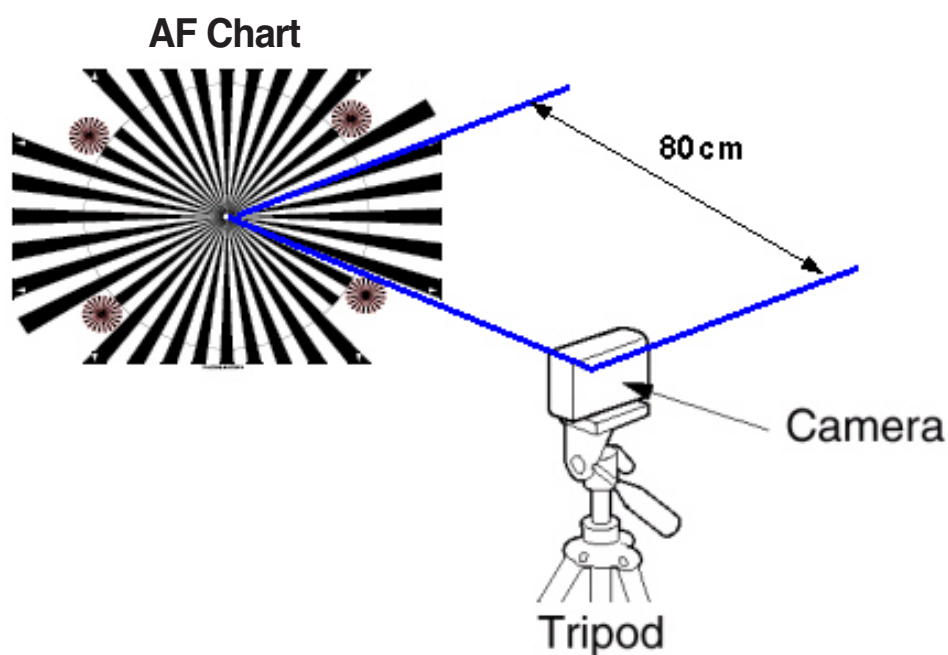
Required Equipment: Focus Adjustment Chart and Tripod

< Adjustment Procedures >

a...Put up the Focus Adjustment Chart.

b...Install the camera on the tripod.

c...Set the camera up so that the distance between the camera and the chart is 80cm.



d...Save the corresponding adjustment file into the SD card.

e...Install the SD card containing the program file and turn the camera on.

f...The adjustment is conducted automatically.



### III . ADJUSTMENT

---

#### 10) BURNING TEST

This is to detect hardware or software defects in a camera by repeated use of the camera functions.

a...Save the Burning program into the SD card.

b...Install the SD card containing the program file and turn the camera on.



c...The camera functions will automatically run in the predetermined order.

※ If the test is completed successfully, the "Burning..END" message will be displayed on the LCD and then the camera will automatically be turned off.

## 11) EEPROM READ

This reads the data saved in the EEPROM of the camera and writes the data as a data file.

< Procedures >

a...Save the adjustment program into the SD card

b...Install the SD card containing the program file and turn the camera on.



c...If you turn the power on, the camera automatically reads the data saved in the EEPROM and saves the data into the SD card as a file.

d...When all data are read and saved into the SD card, turn the power off.

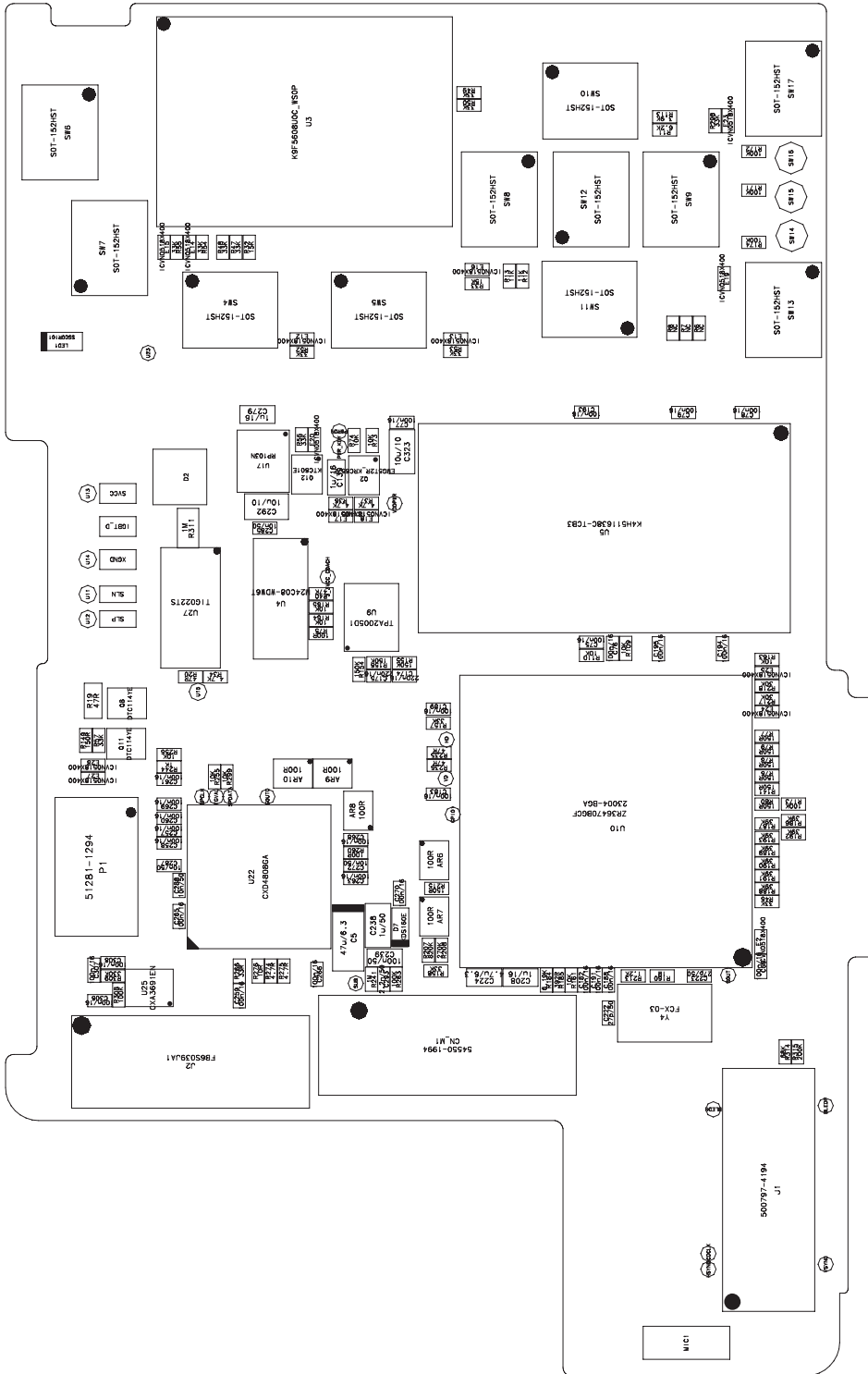
e...If you insert the SD card into a PC, you will be able to find the L3\_83\_E2PR.CSV file.



# IV. PATTERN DIAGRAM

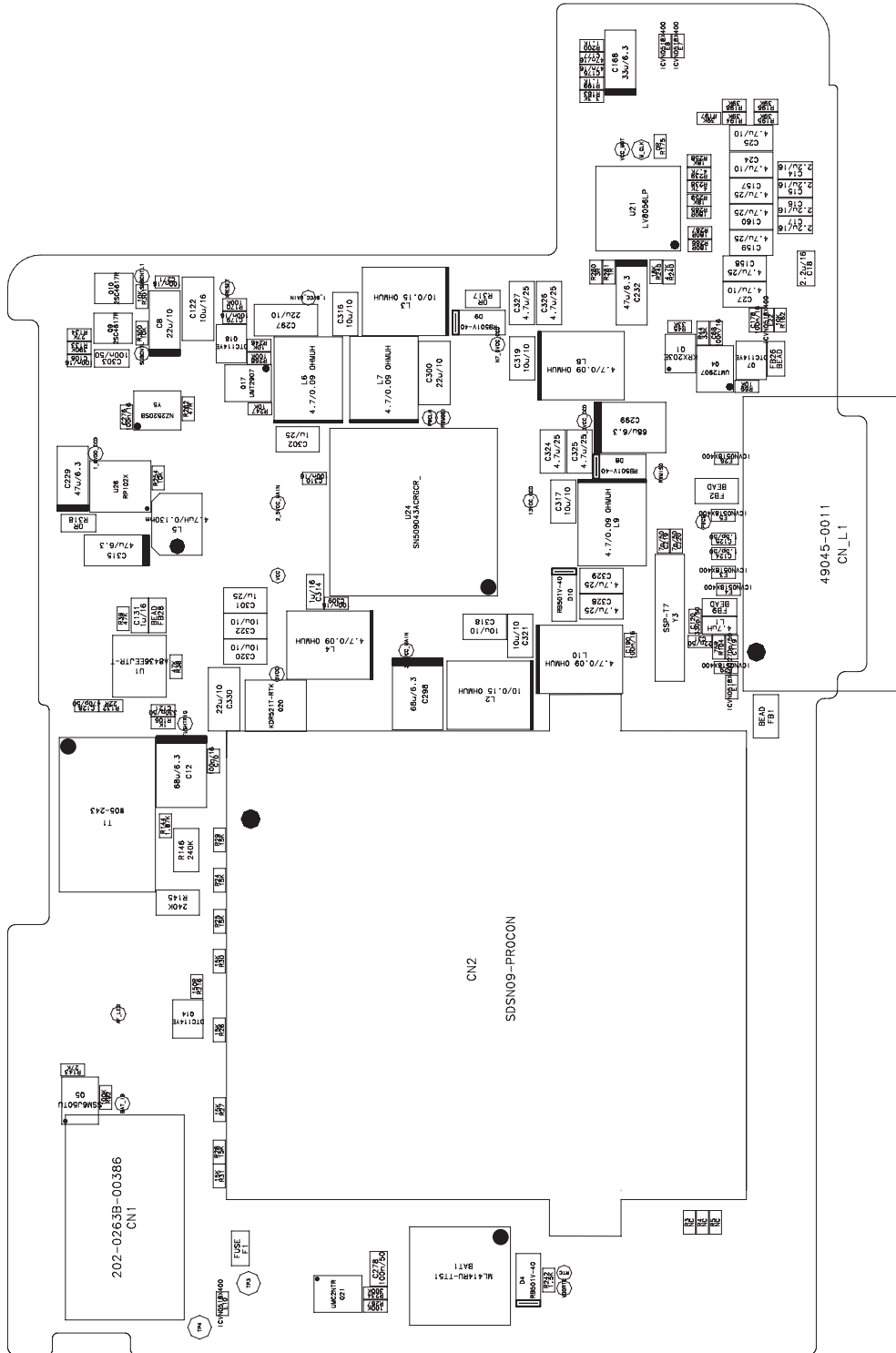
## 1. PARTS ARRANGEMENT FOR EACH PCB ASS'Y

### 1) MAIN\_TOP

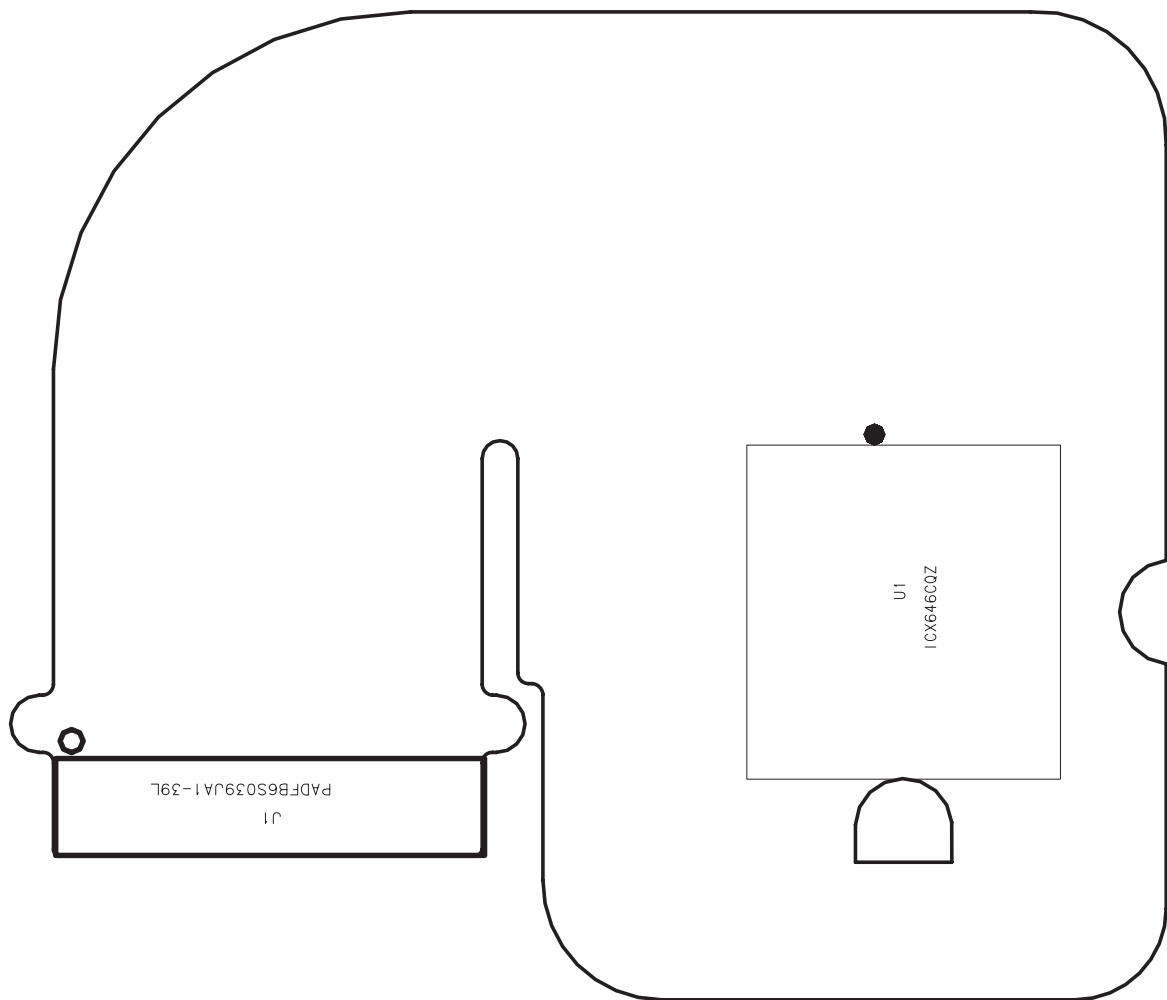


IV. PATTERN DIAGRAM

2) MAIN\_BOTTOM

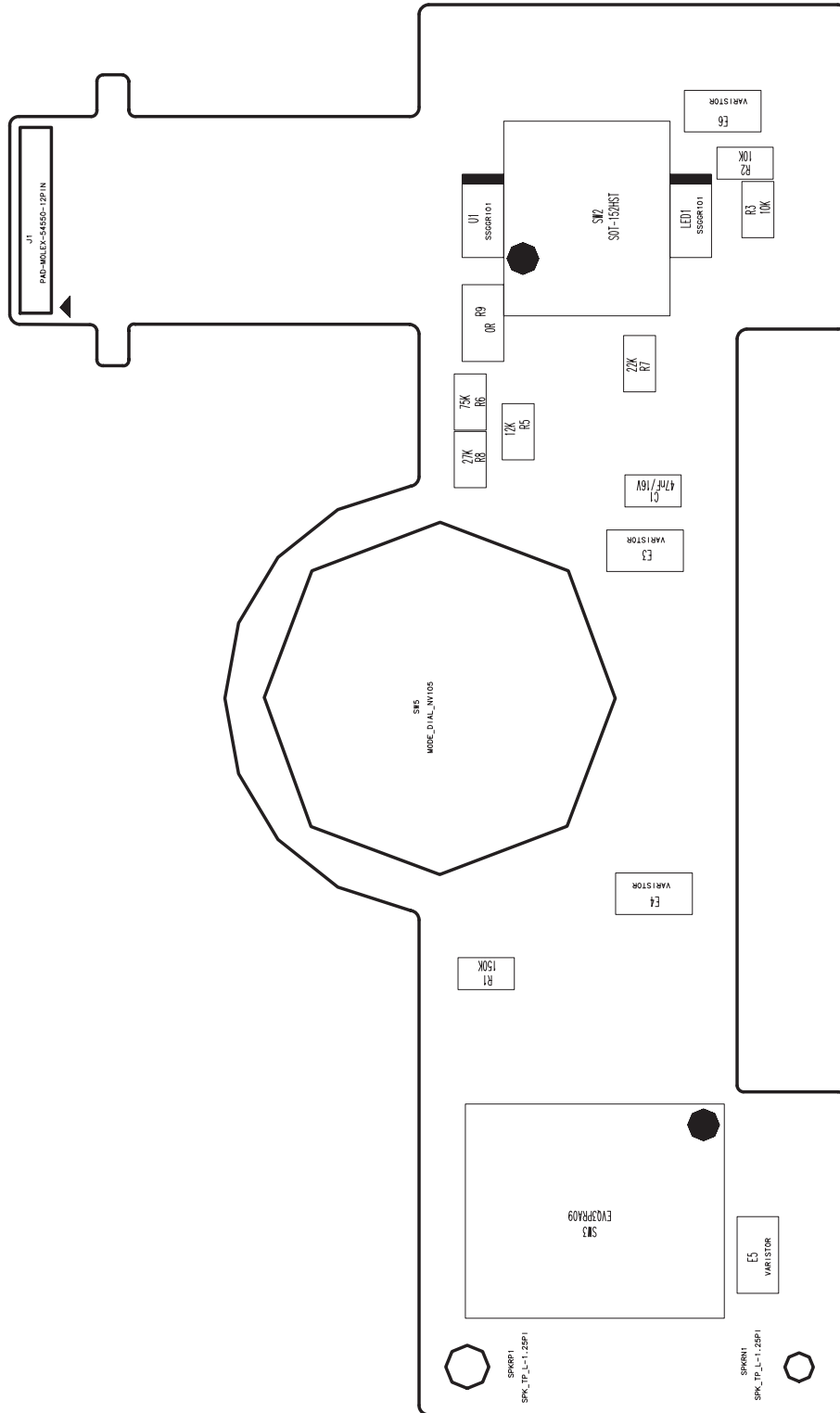


3) CCD

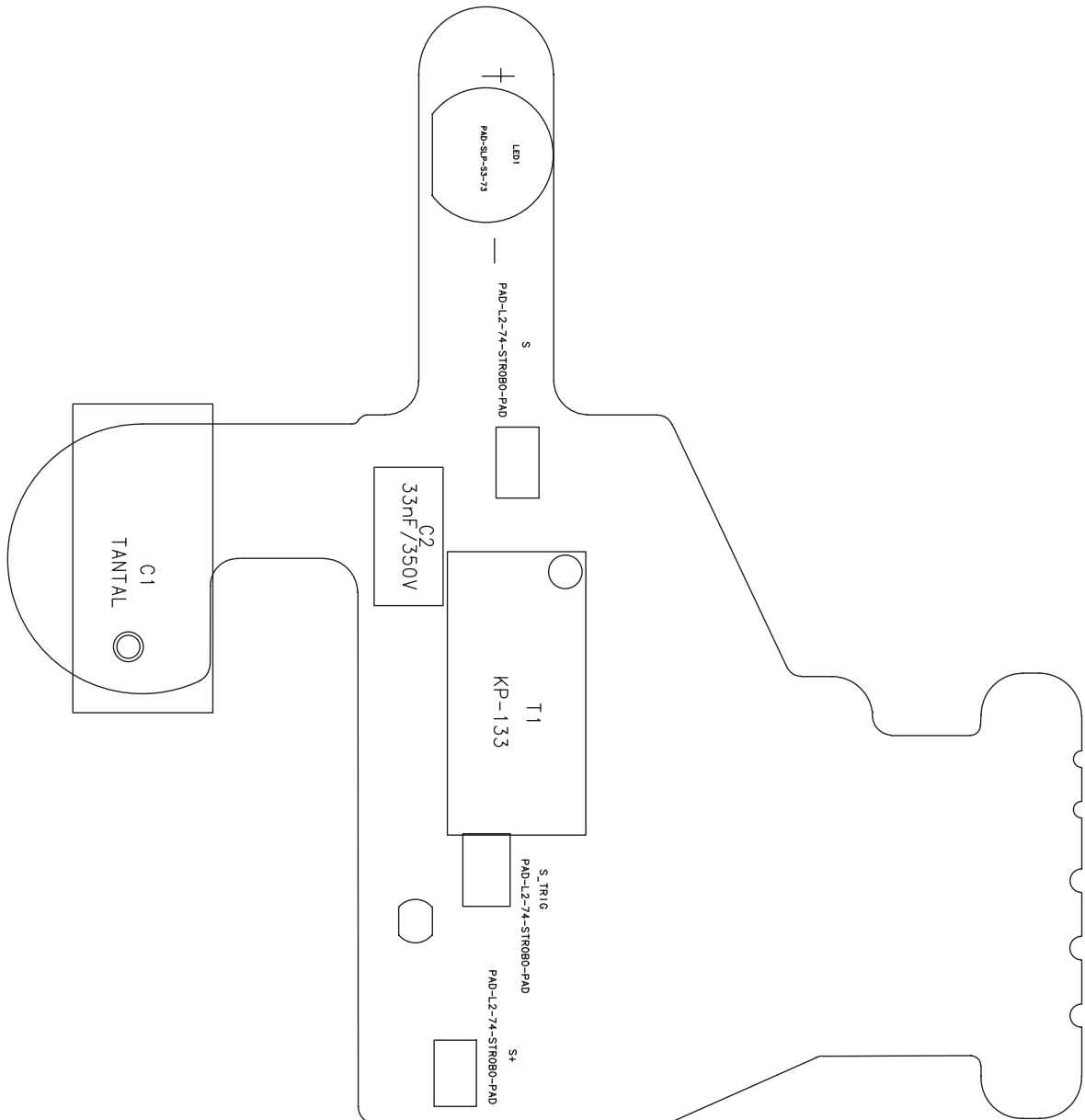


# IV. PATTERN DIAGRAM

## 4) MODE



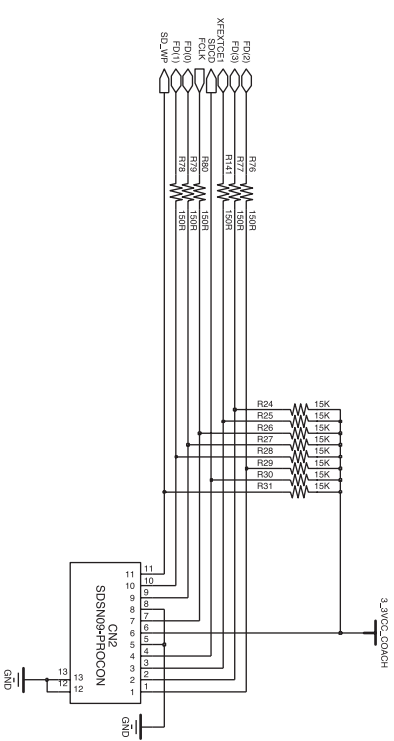
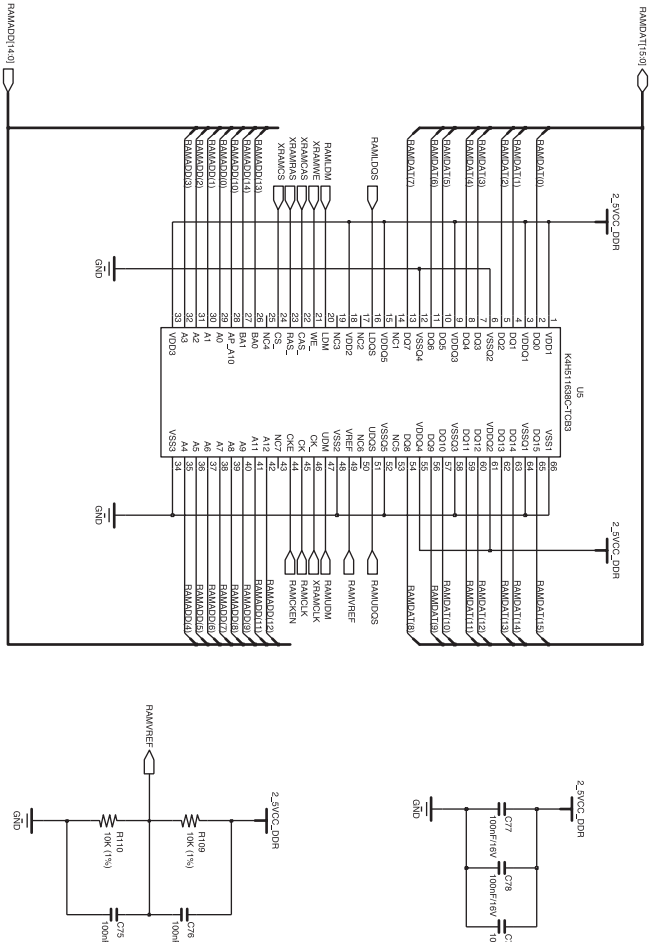
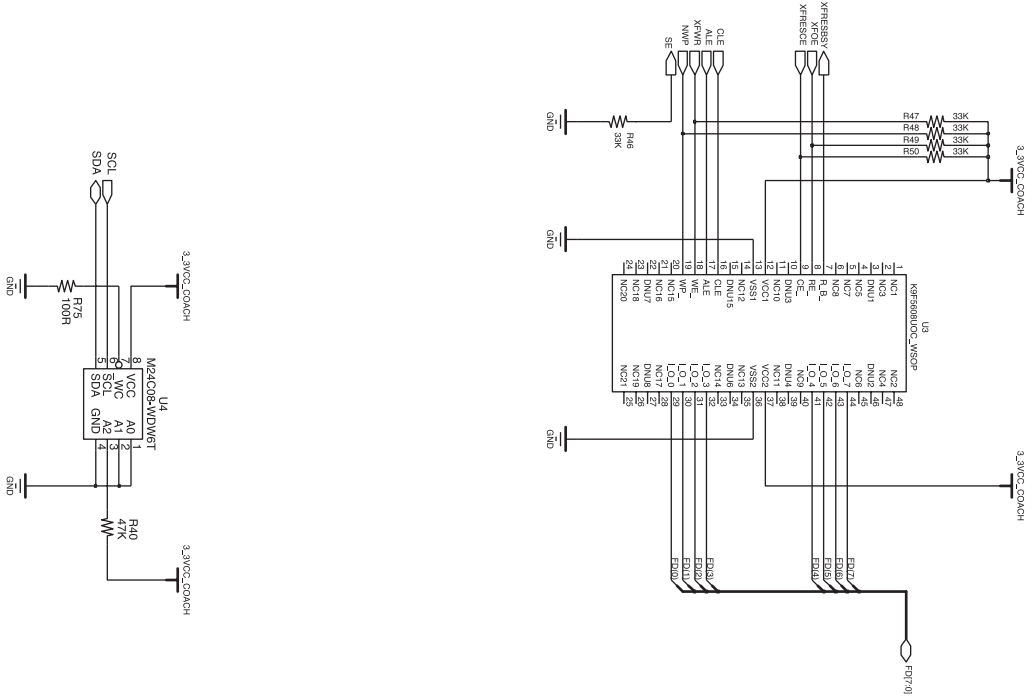
5) STROBO





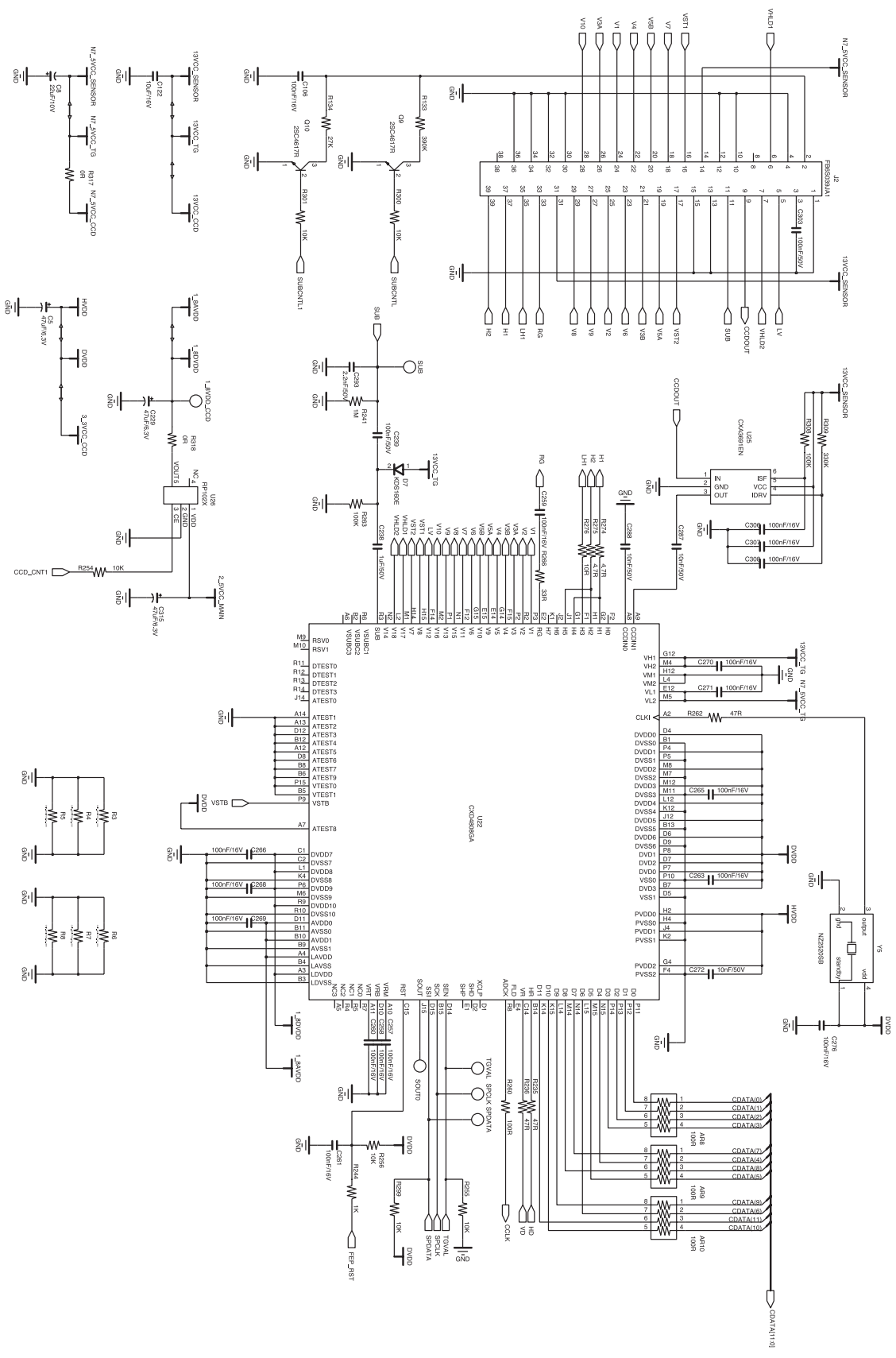


2) MAIN\_MEMORY

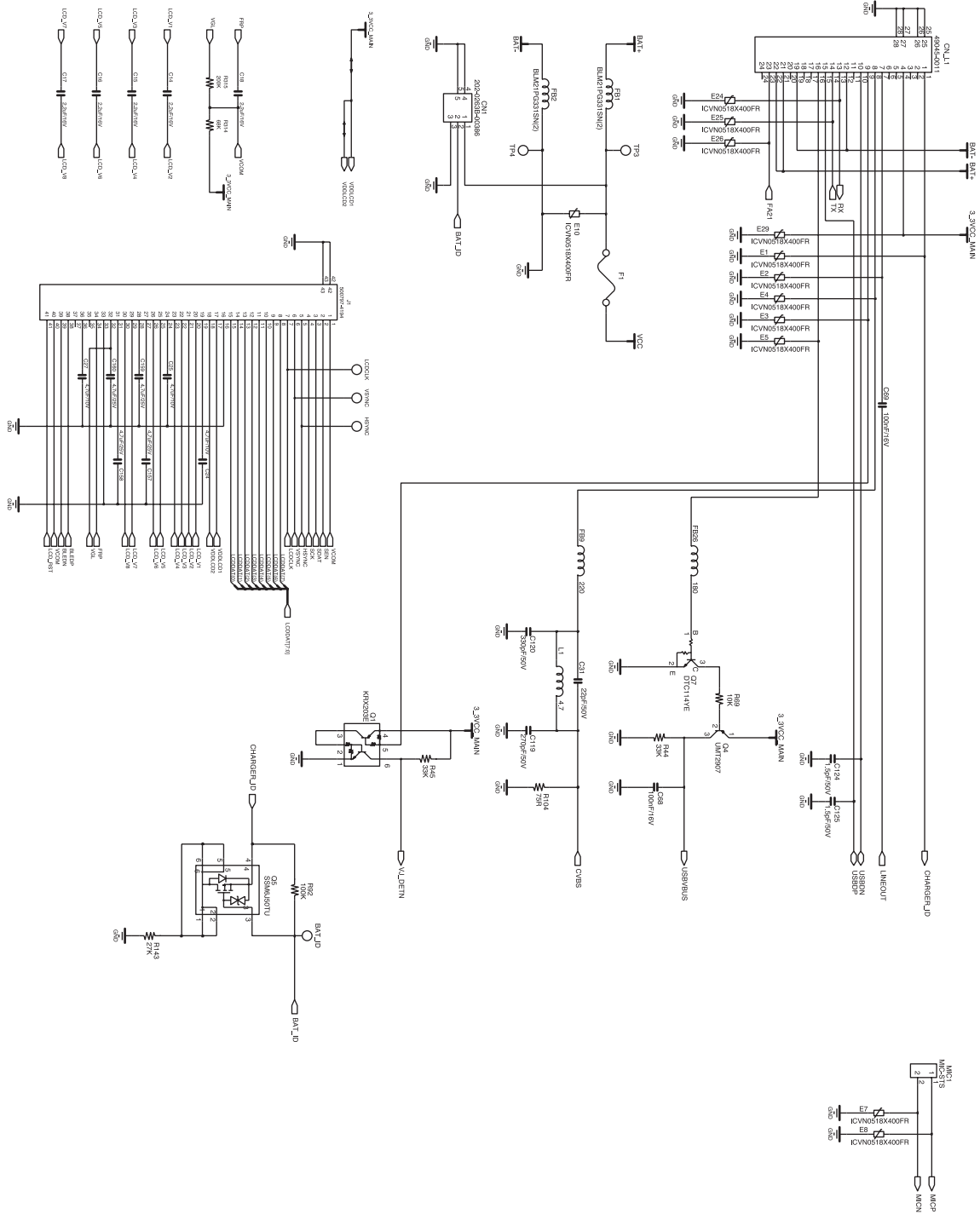


# V. CIRCUIT DIAGRAM

## 3) MAIN\_CCD

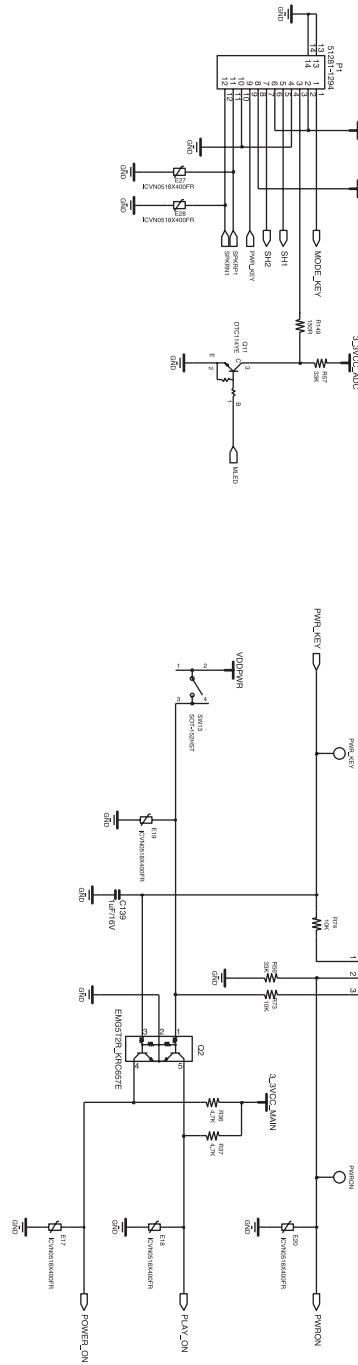
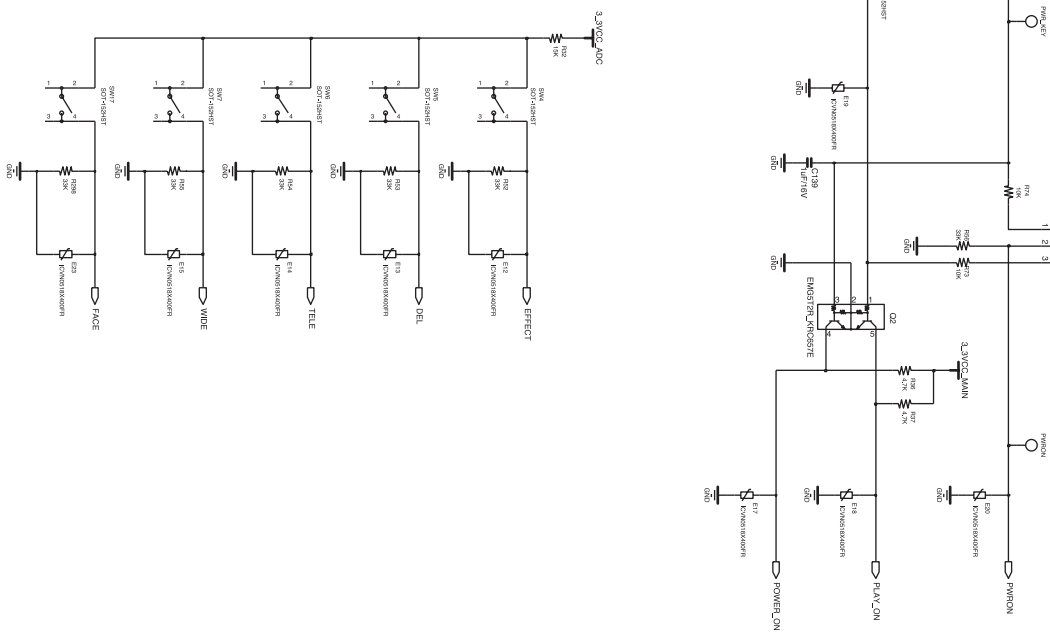
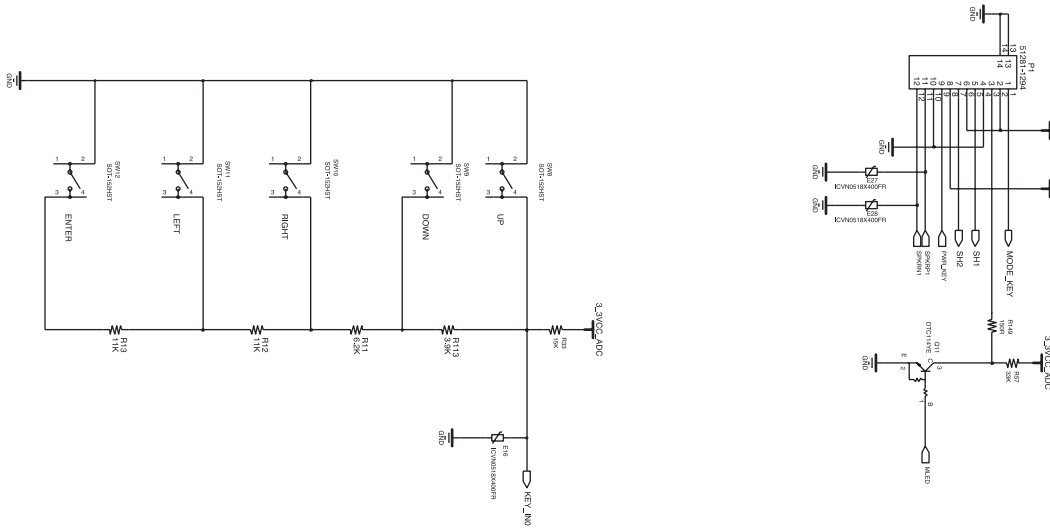


4) MAIN\_LCD

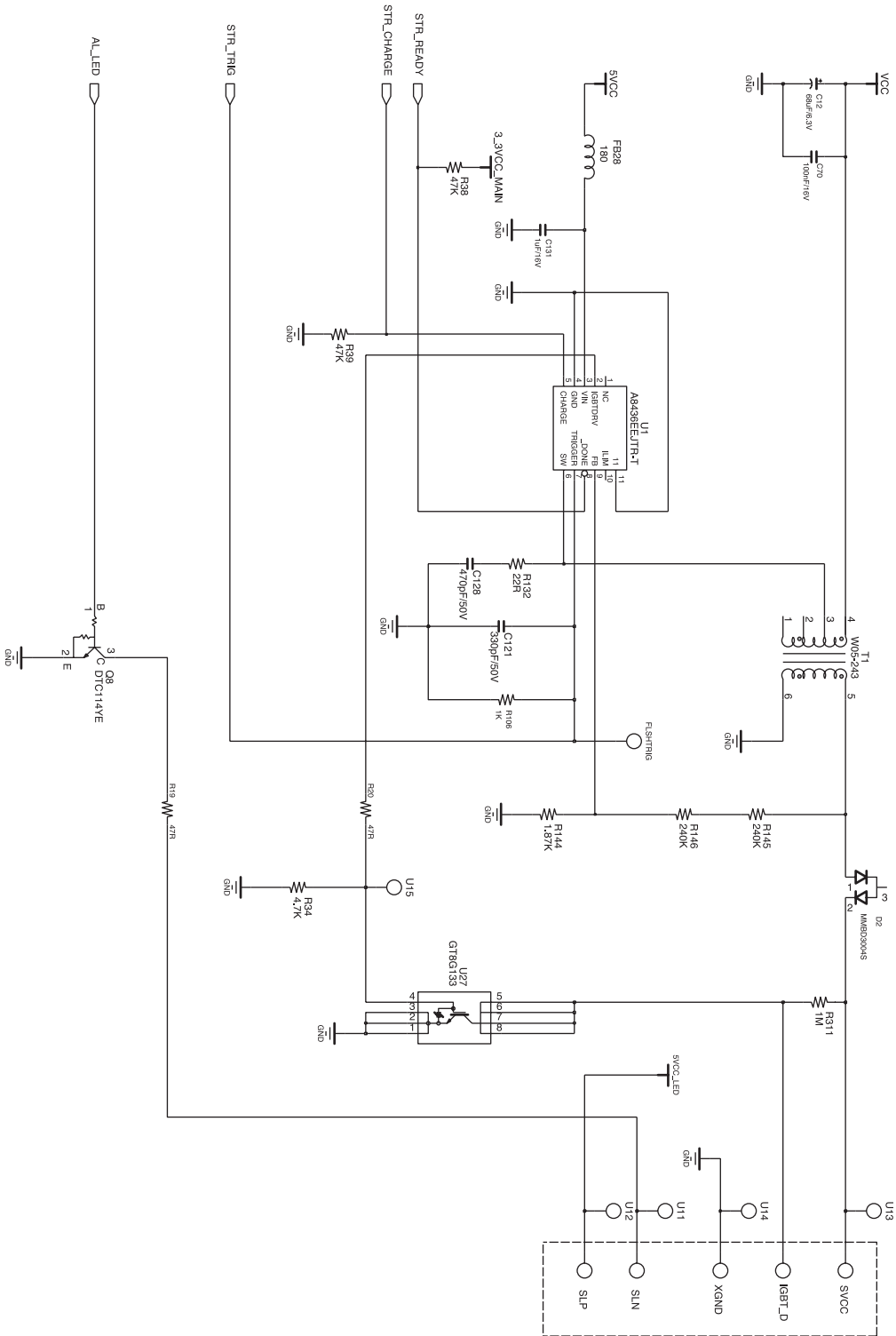


# V. CIRCUIT DIAGRAM

## 5) MAIN\_KEY

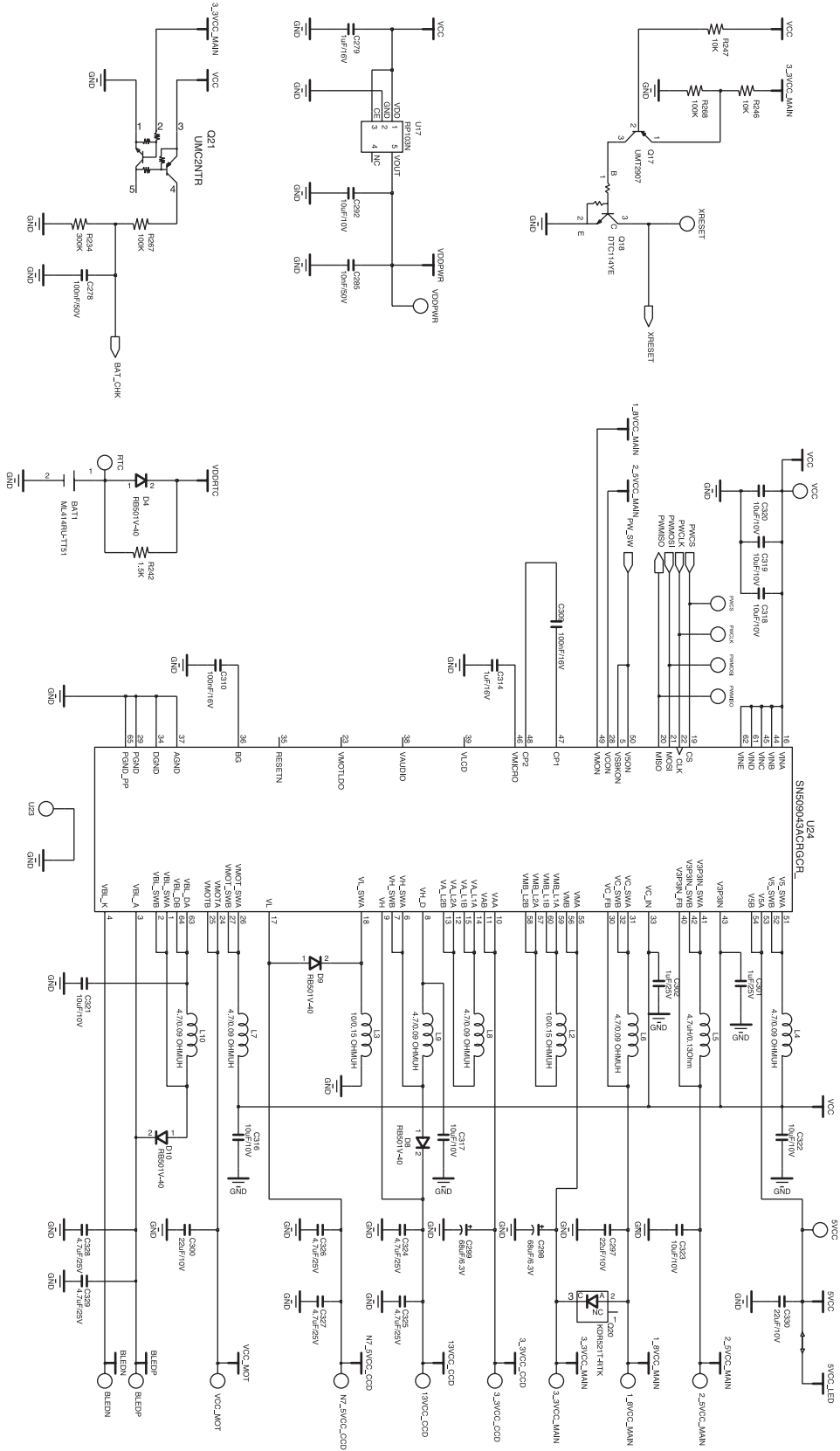


6) MAIN\_STROBO

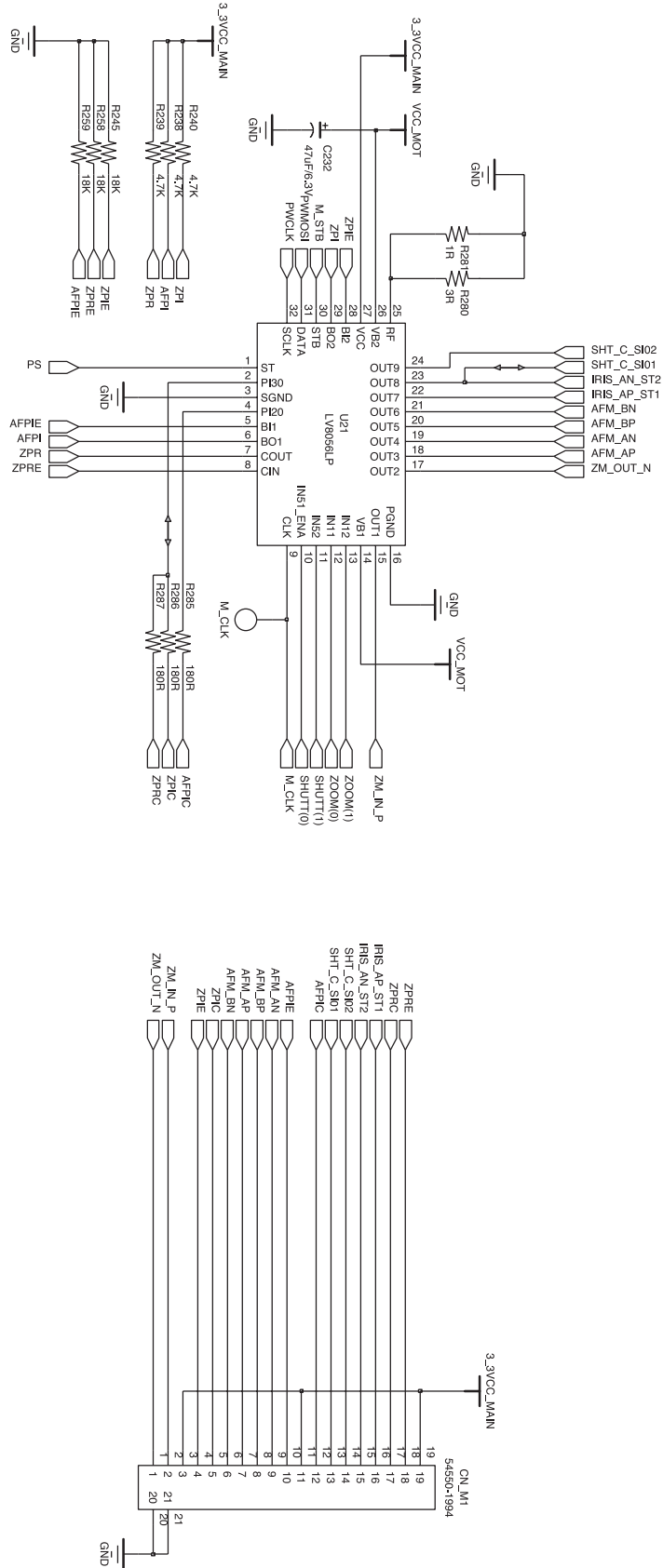


# V. CIRCUIT DIAGRAM

## 7) MAIN\_POWER



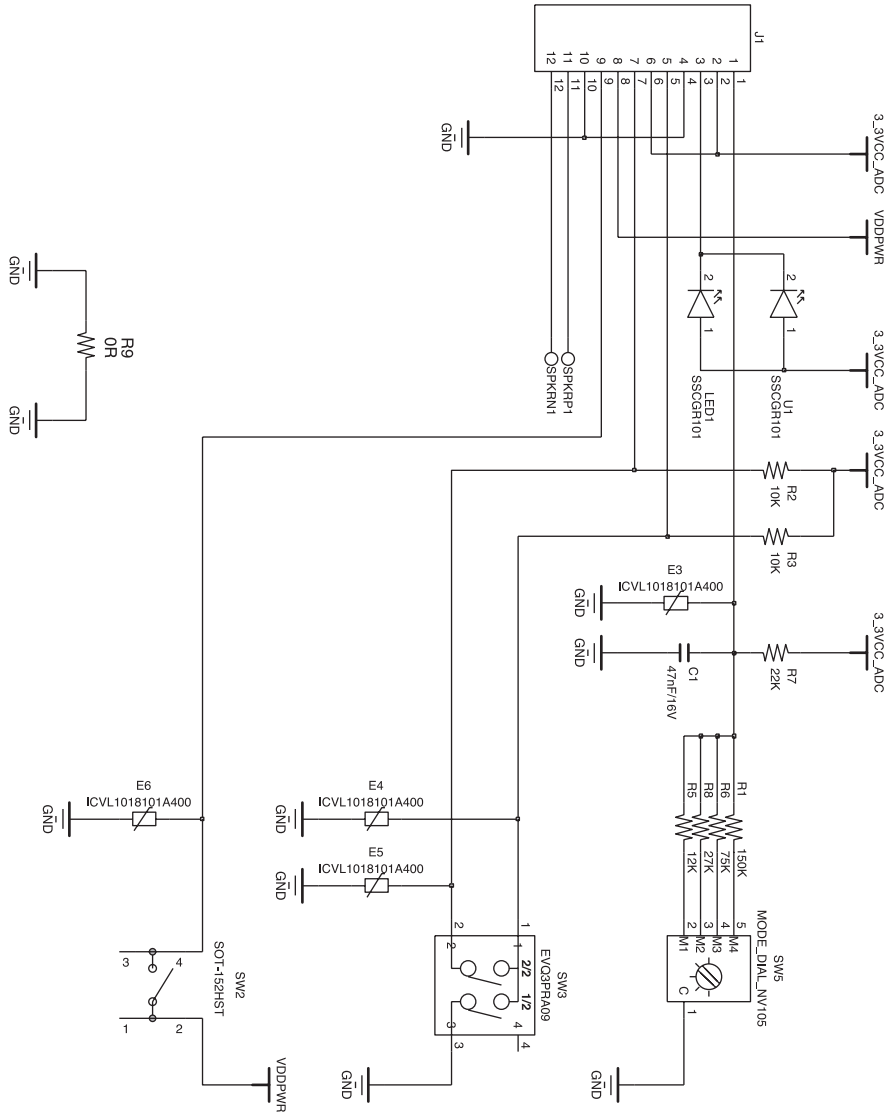
8) MAIN\_MOTOR





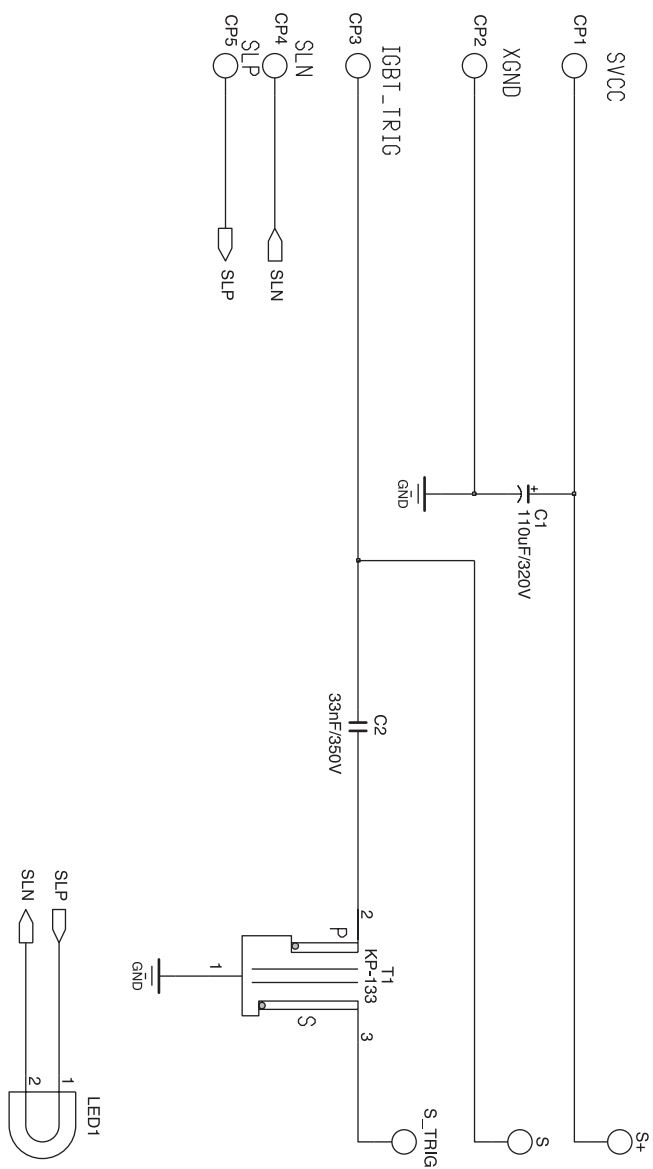


10) MODE



V. CIRCUIT DIAGRAM

11) STROBO



## VI. SERVICE INFORMATION

---

### 1. The order of disassembly and assembly

#### ■ Caution

1. Do the disassembling and assembling camera where the blocking static electricity mat is on the table.
2. When handling the major PCBs of camera, please wearing the band which cuts off the electric current on the wrist.
3. When handling the major parts, be careful of below caution.

Parts	Caution
F PCB type	When assembling the F PCB to the CONNECTOR by using pincette, be careful of tearing and hooking.
CCD CCD & IR CUT	Be careful of the handprinting while handling them. Using the pincette which has soft tip. The spot will be shown by using normal alcohol when cleaning them. Do the repairing where is no dust.
PCB type	Wearing the band which cuts off the electric current and do the repairing where the blocking static electricity mat is on by preventing the defect of parts.
CONTACT type	Be careful of defect and change by pincette.

■ **Disassembling the Camera**

1. Remove the 2 screws.



2. Remove the 4 screws.



3. Remove the 2 screws.



4. Separate the Back Cover.



## VI. SERVICE INFORMATION

---

5. Separate the Side Cover.



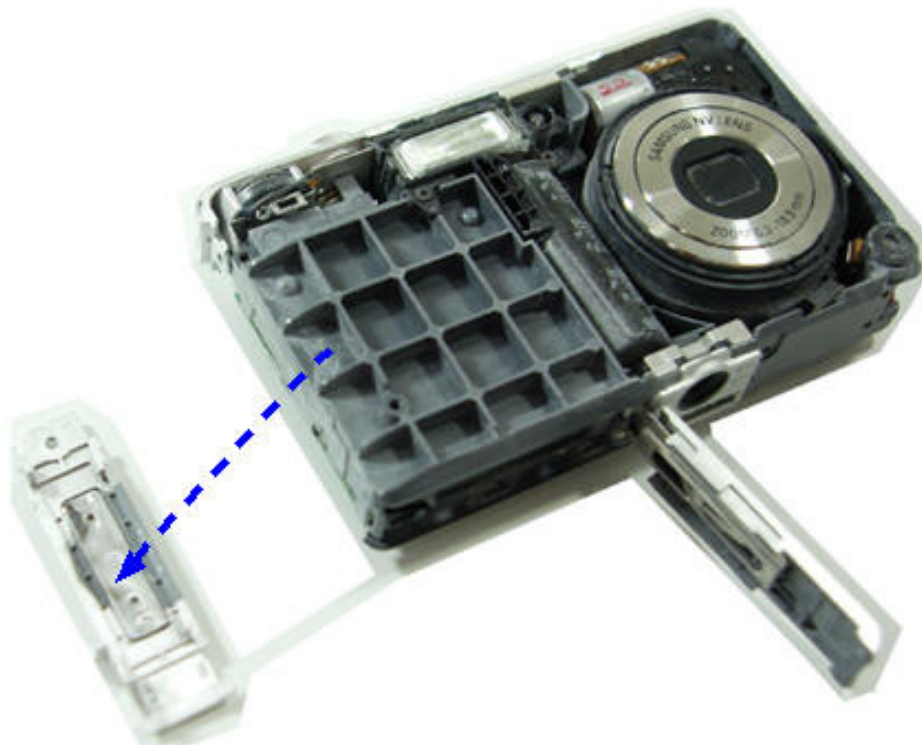
6. Separate the Front Cover.



7. Remove the screw.



8. Separate the Side Cover.

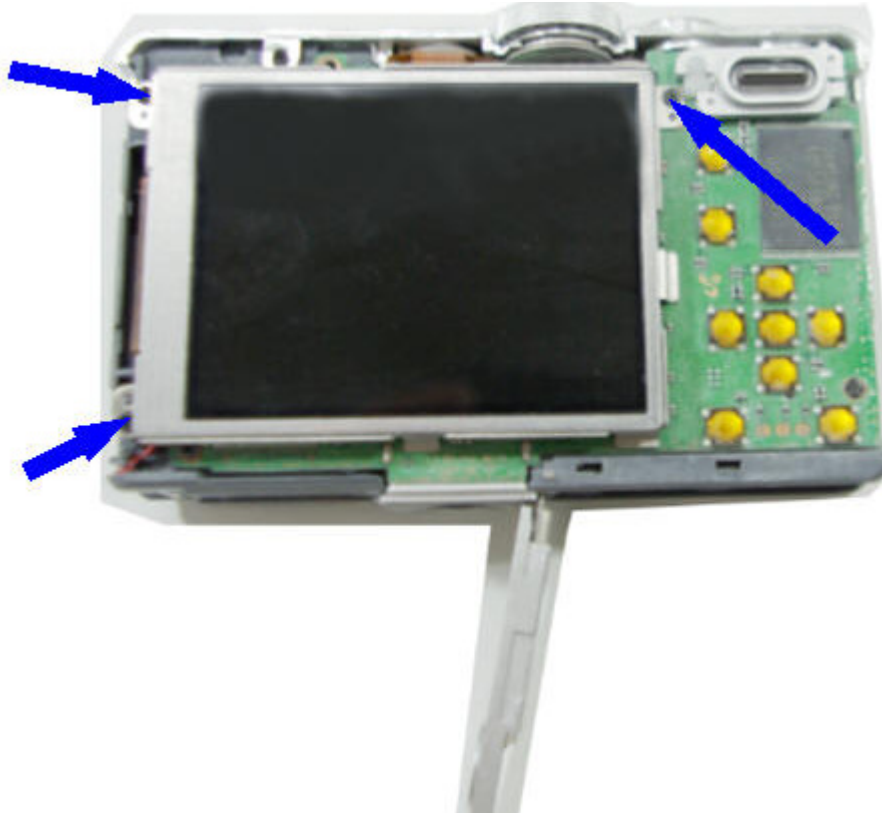




## VI. SERVICE INFORMATION

---

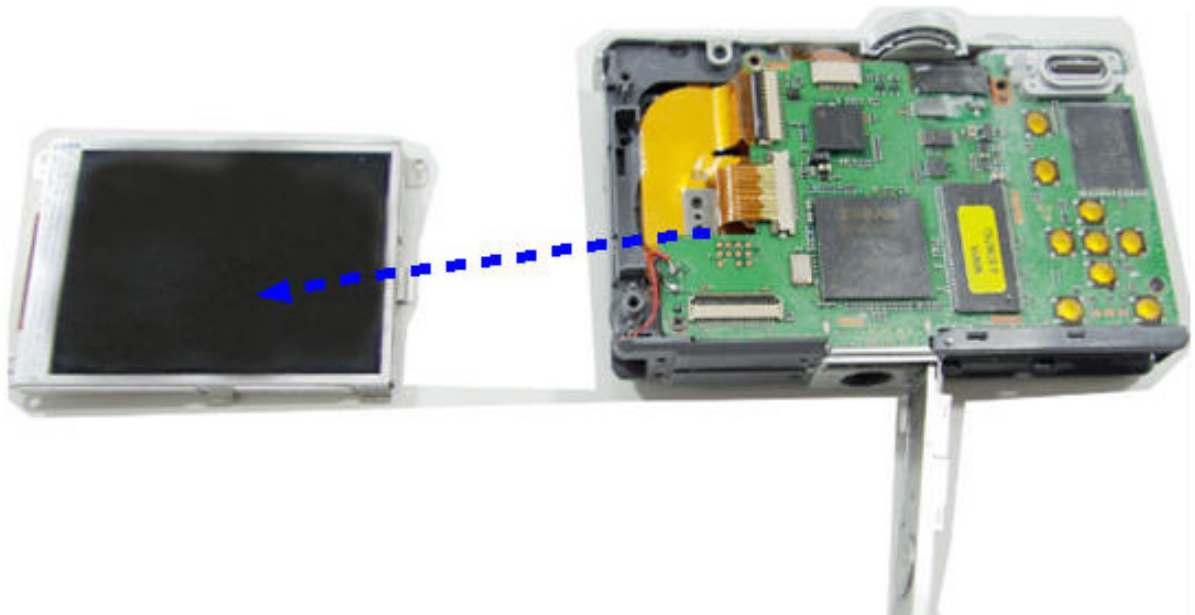
9. Remove the 3 screws.



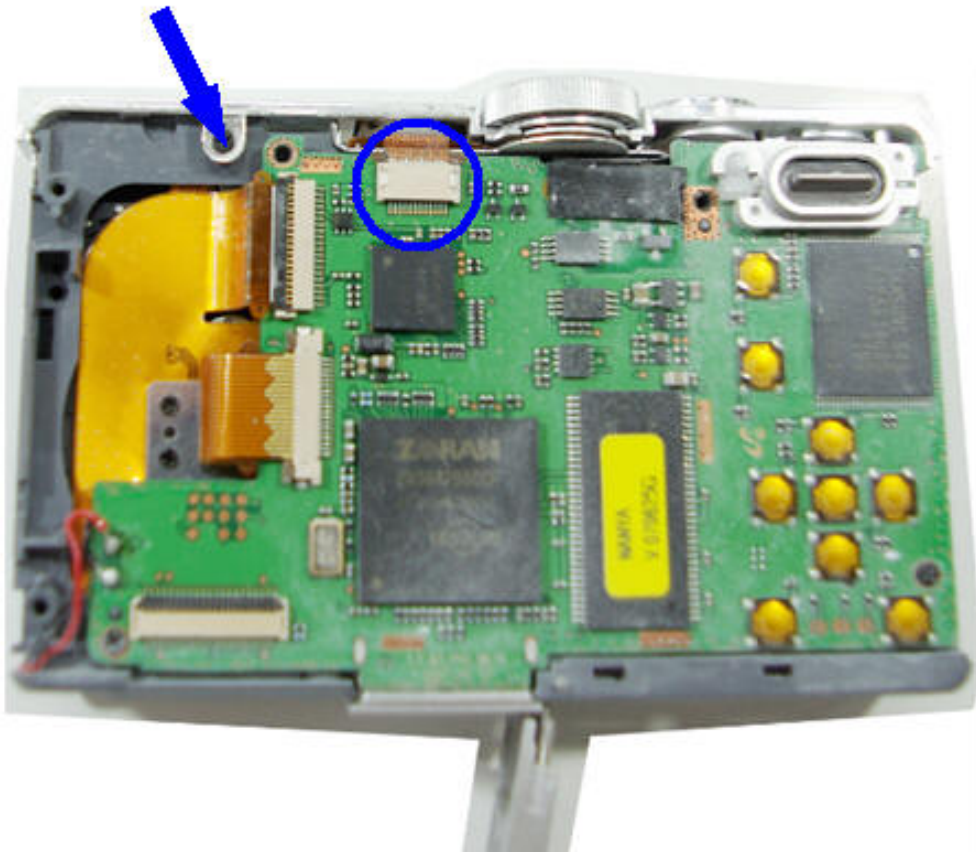
10. Separate the PCB from the connector.



11. Separate the LCD Assy.



12. Separate the PCB from the connector and remove the screw.



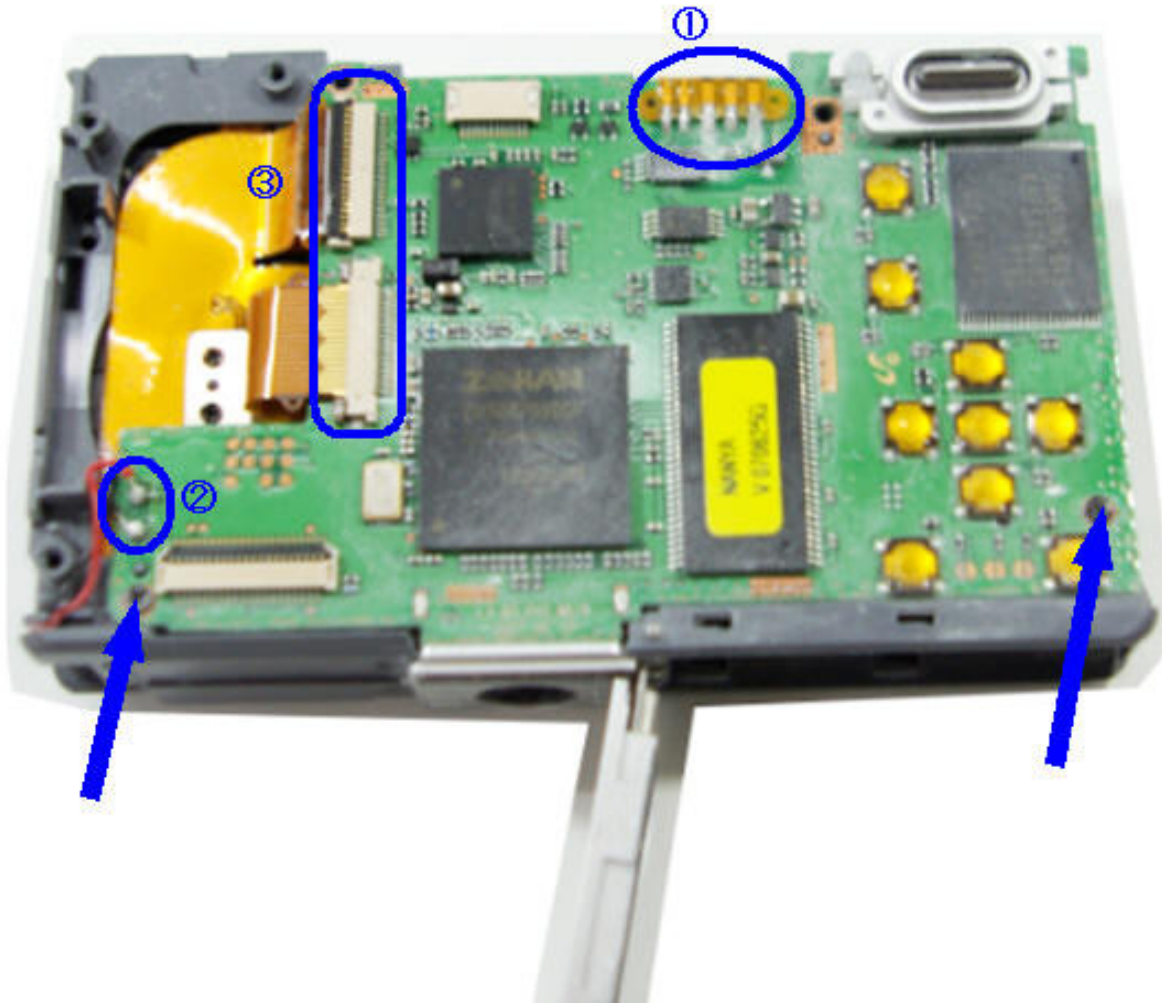
13. Separate the Top Cover.



**Caution. Discharge Point:** Discharge to the main condenser as shown by the figure below.



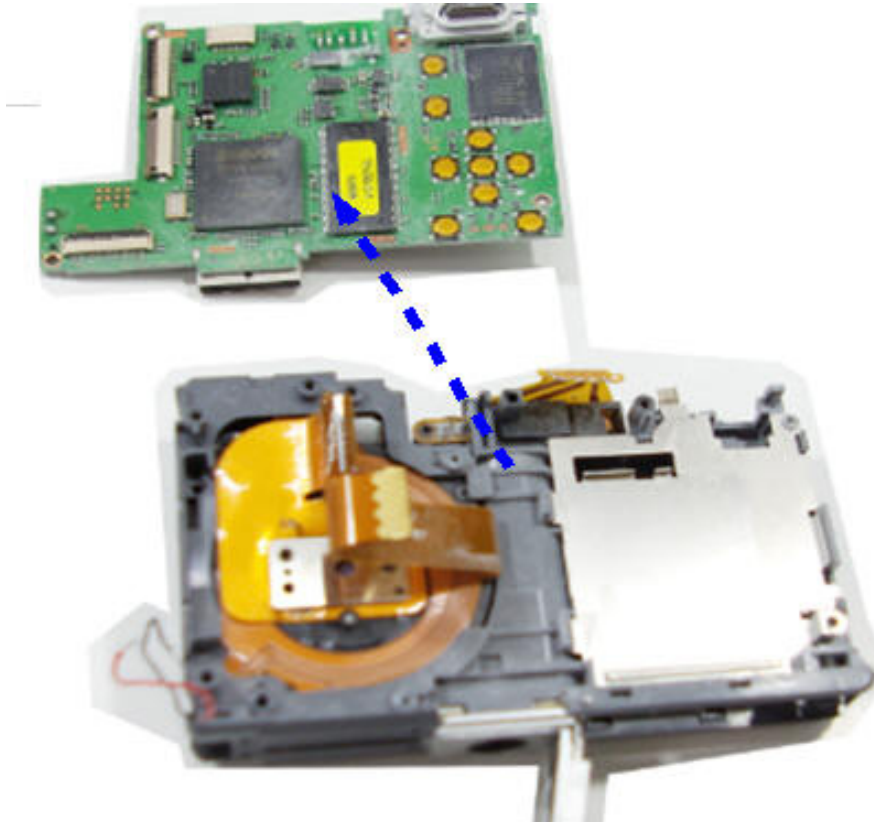
14. ① Unsolder the wires from the PCB.
- ② Separate 2 wires (Red and Black) by unsoldering them.
- ③ Separate the 2 PCBs from the connector and remove the 2 screws.



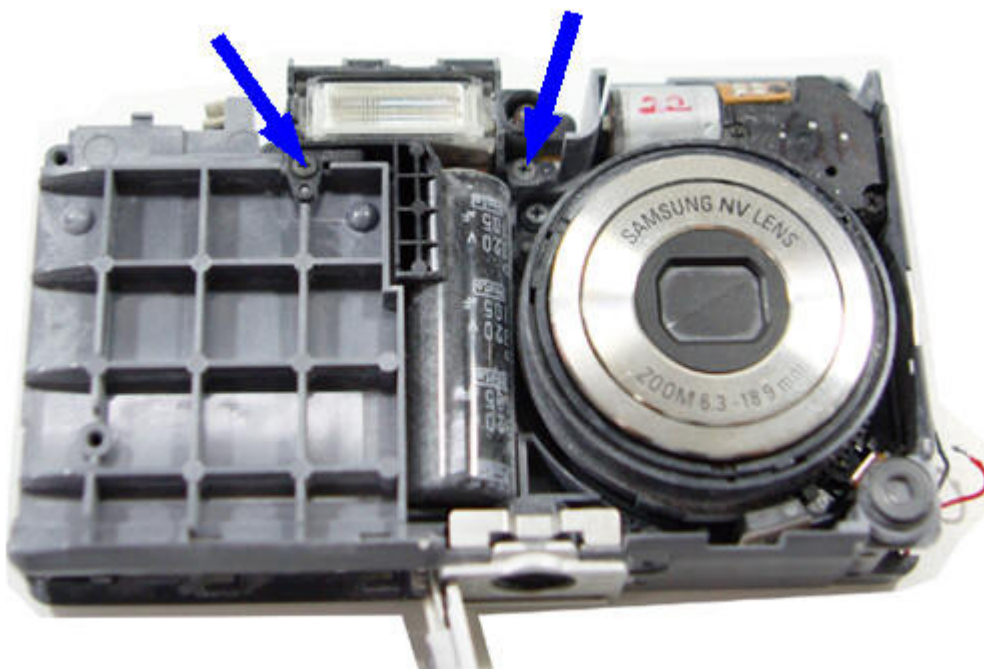
## VI. SERVICE INFORMATION

---

15. Separate the Main PCB.



16. Remove the 2 screws.

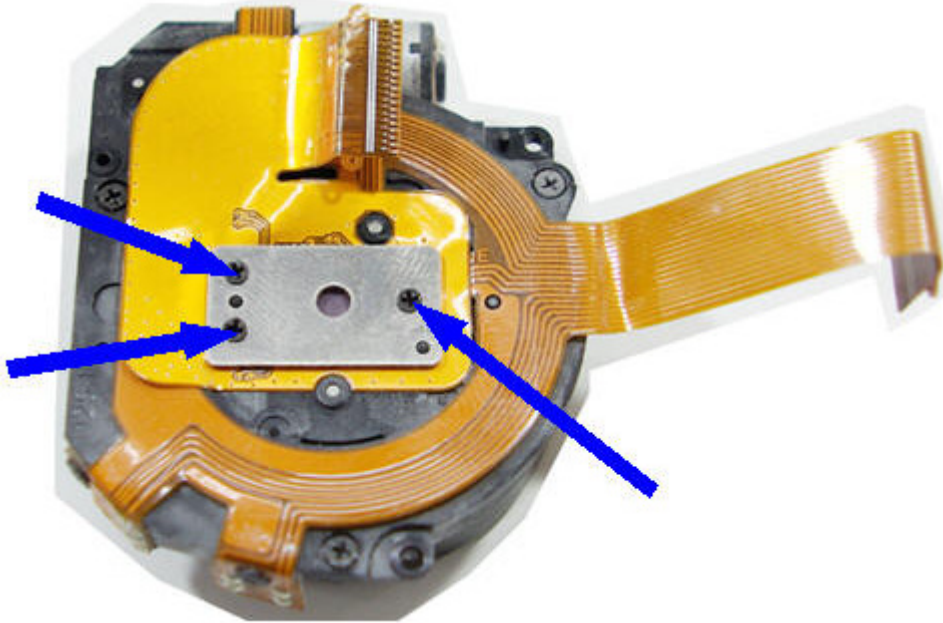


17. Separate the Flash PCB.

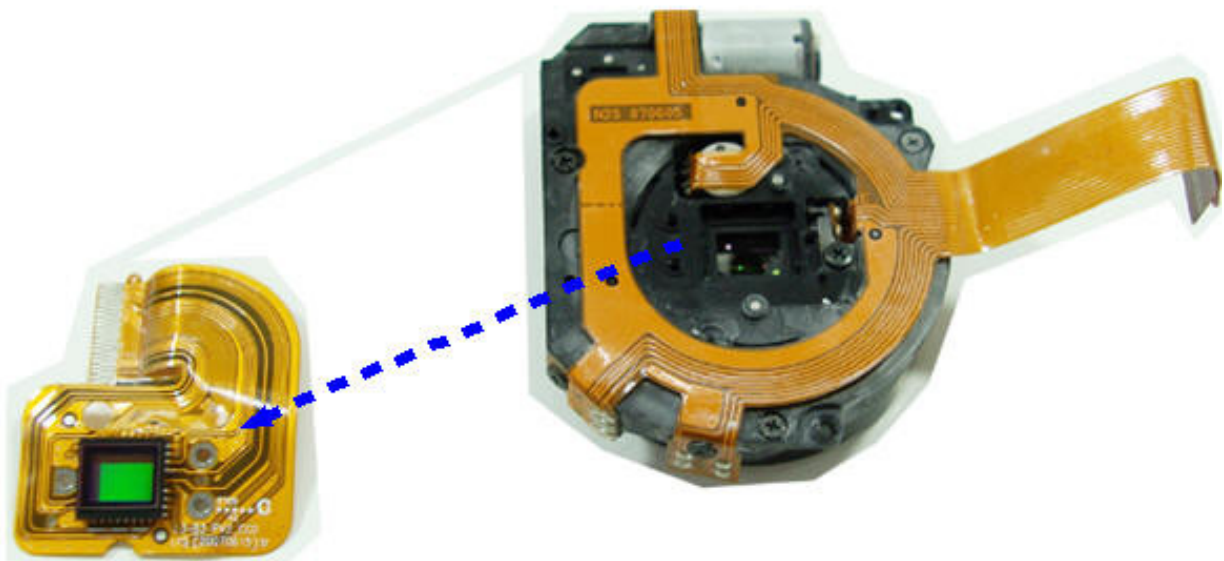


■ **Disassembling the Barrel**

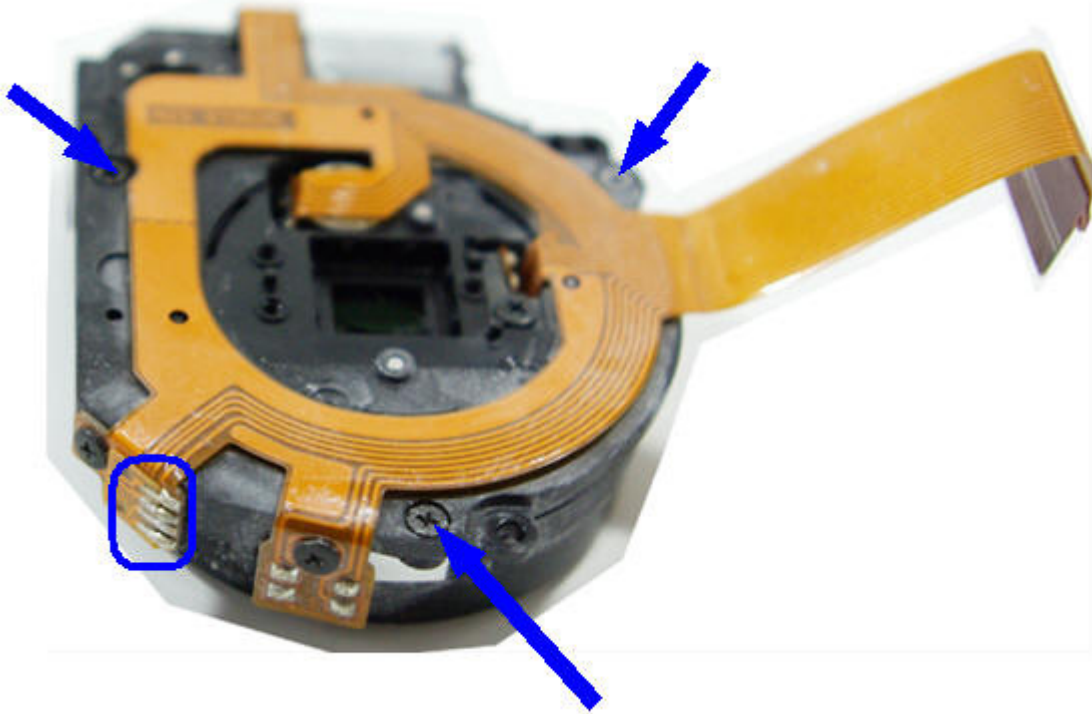
1. Remove the 3 screws.



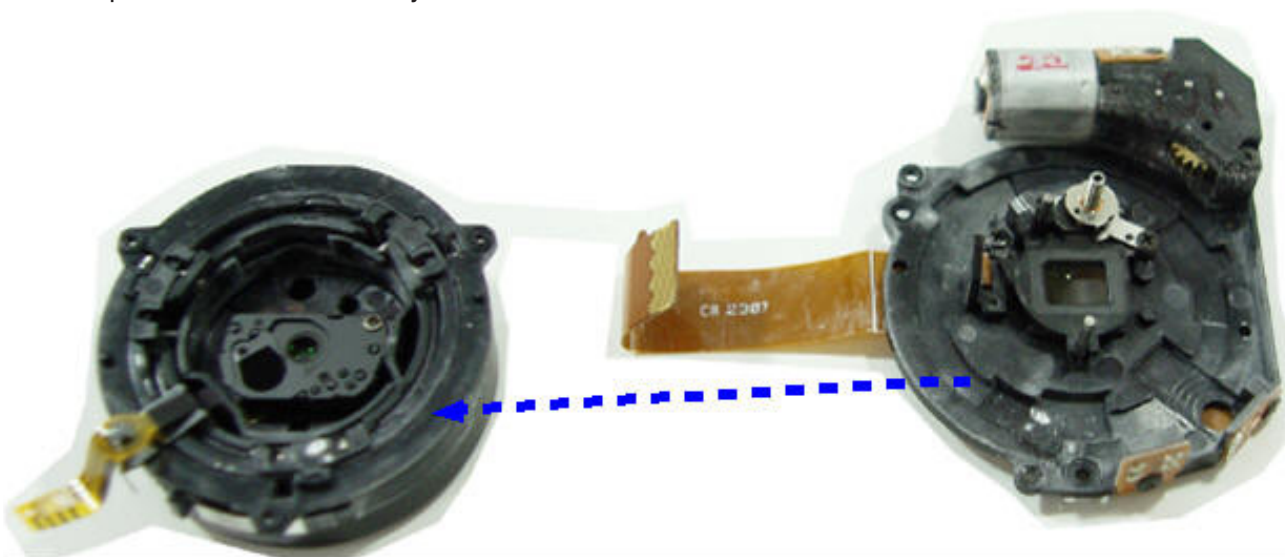
2. Separate the CCD PCB.



3. Unsolder the wires from Shutter PCB and remove the 3 screws.



4. Separate the Lens Base Assy.





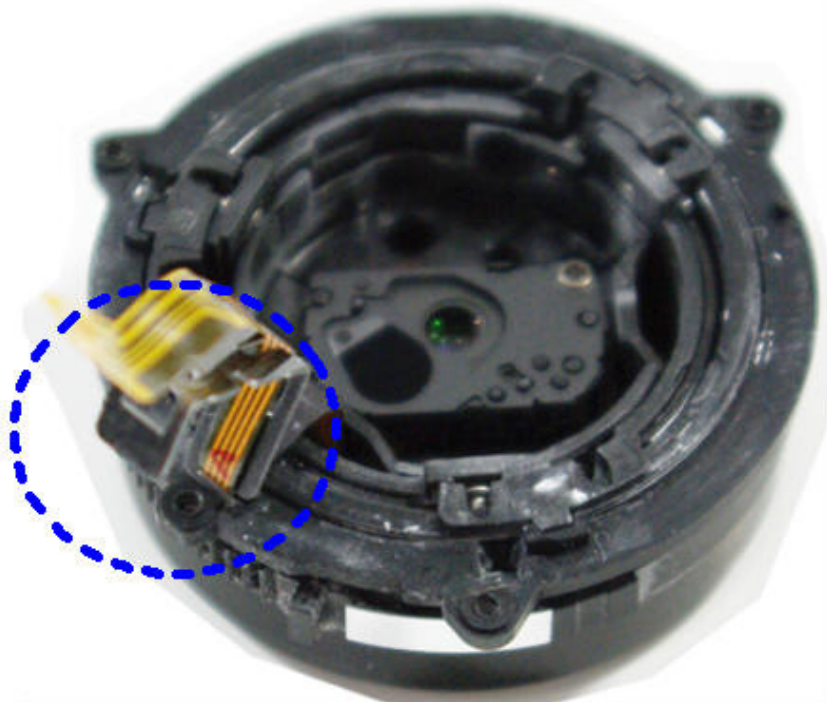
## VI. SERVICE INFORMATION

---

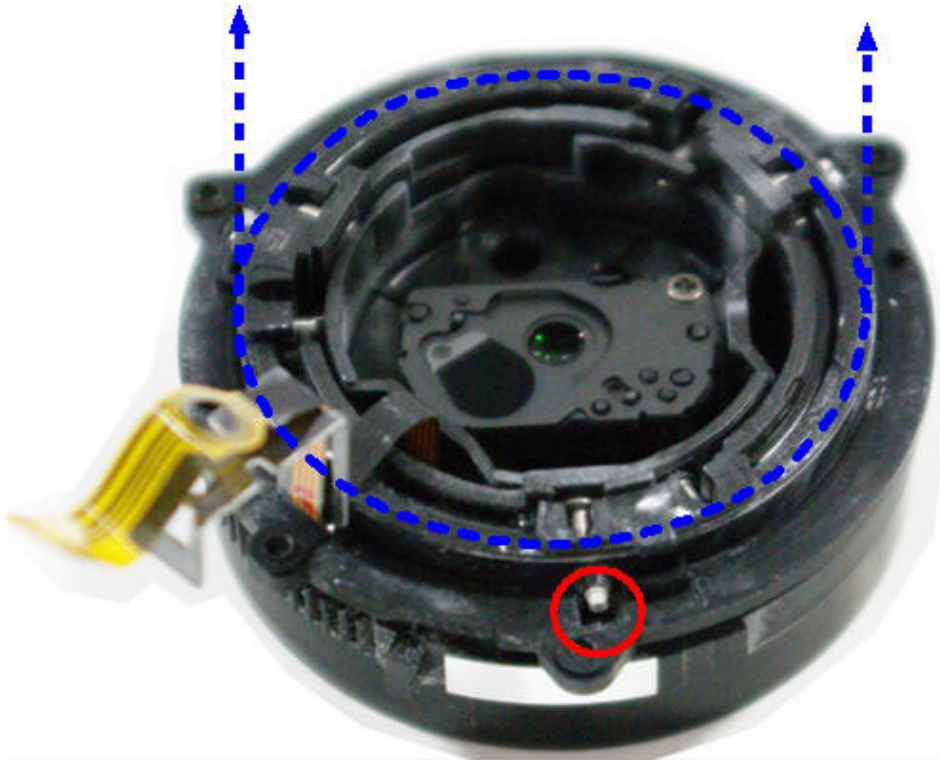
5. Remove the screw fixing the Shutter PCB.



6. Separate the Shutter PCB fixing frame.



7. Separate the Outer Guide Barrel with reference to the part circled in red as shown below.



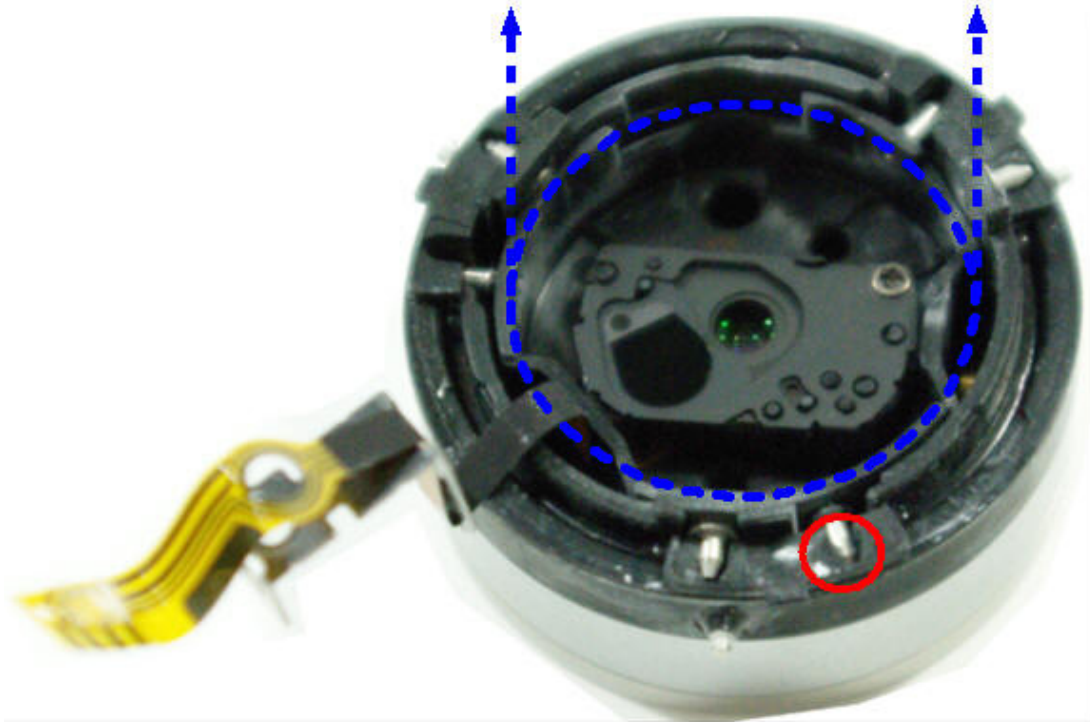
8. Separate the Outer Guide Barrel.



## VI. SERVICE INFORMATION

---

9. Separate the Inner Cam Barrel Assy with reference to the part circled in red as shown below.



10. Separate the Inner Cam Barrel Assy.



11. Separate the Lens Cap Assy with reference to the part circled in red as shown below.



12. Separate the 3 catches at the bottom.



## VI. SERVICE INFORMATION

---

13. Separate the Guide Plate.

